

Fassa complete thermal render project on modern apartment development

WHYTELEAFE HOUSE CASE STUDY



FASSA UK Ltd

Fassa House, Ashchurch Business Centre,
Alexandra Way, Ashchurch, Tewkesbury GL20 8TD
www.fassabortolo.com

ORDERS

orders.uk@fassabortolo.com
Tel. +44 (0)1684 212272

SALES ENQUIRIES

info.fassauk@fassabortolo.com
Tel. +44 (0)1684 218305

TECHNICAL ASSISTANCE

technical.assistance@fassabortolo.com



FASSA BUSINESS DEVELOPMENT MANAGER

Andy Sampson

PROJECT

Whyteleaf House, Warlingham

INSTALLER

RFL

CLIENT

Comer Homes Group



WHYTELEAFE HOUSE

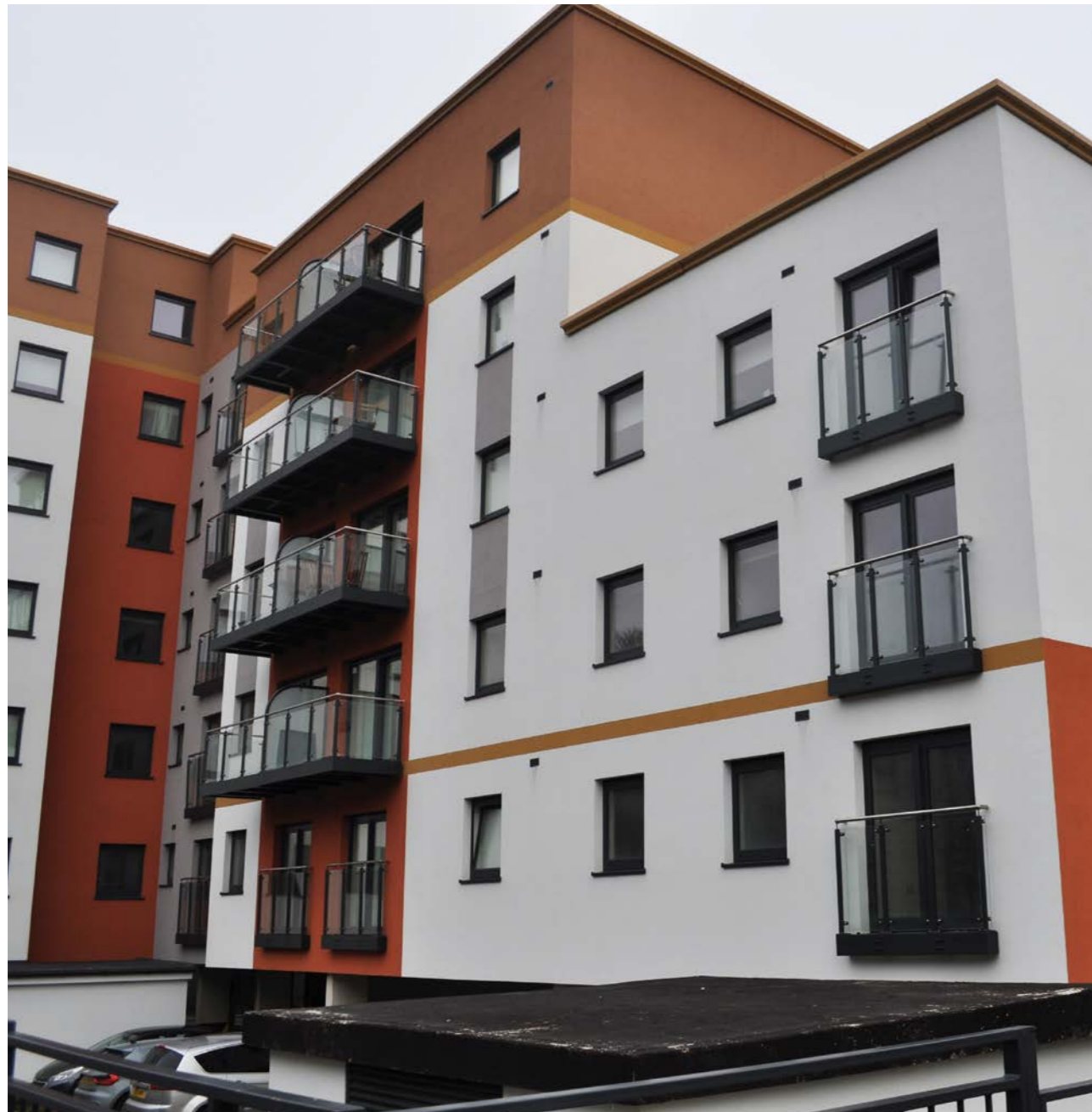
WARLINGHAM

Leading Italian render manufacturer, Fassa Bortolo, has completed work on a large-scale residential development in Warlingham, Surrey.

Whyteleaf House is a brand-new collection of over 160 one, two and three bedroom contemporary apartments. The complex boasts a concierge, a fully equipped gym, parking facilities and a communal

garden for residents to enjoy and is well connected to the wider area.

Building on a longstanding relationship with Comer Homes, Fassa secured the project at pre-planning stage. The team proposed the FassaTherm Plus system to ensure the build would achieve the necessary U-values, fire rating, colour and texture that the client was looking



for, all while meeting specific budget parameters. As a result of early involvement, Fassa were able to assist both the client and installer, RFL, throughout the course of the project to ensure a professional, high-quality finish and seamless communication.

Andrew Sampson, Fassa Business Development Manager managed the 4000m2 project from start to finish, ensuring a smooth operation throughout.

David Donnellan, Structural Engineer at Comer Homes Group, comments: "The practical and professional advice provided by Fassa on our Whyteleaf House project was invaluable. The project posed various significant challenges with junctions between different façade treatments. The solutions provided by Fassa

"The solutions provided by Fassa enabled us to overcome these challenges and the finished product looks outstanding."

David Donnellan, Structural Engineer at Comer Homes Group



enabled us to overcome these challenges and the finished product looks outstanding. We have a very good working relationship and are very much looking forward to the next opportunity to work together."

Marcus Alcindor, Managing Director at RFL, controlled the installation of the project. He adds: "Whyteleafe House was our first experience of working with Fassa. The team were familiar with the developer and knew

the project intimately. They understood every detail of the project and advised us accordingly. Coupled with a practical and proactive client, this made our life easy, and the project ran smoothly.

"All deliveries were on time and the quality of the materials were second to none. This is part of the reason we now have such a positive relationship with Fassa."



- Fassatherm Frame Plus system, certified by Kiwa BDA
- Utilises A 96 adhesive along with mineral wool insulation
- RX 561 acrylic-siloxane top coat

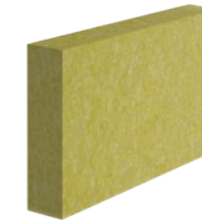


A 96



White and grey fibre-reinforced cementitious adhesive, grading < 1.4 mm.

MINERAL WOOL



Thermal insulation panels, manufactured by melting and spinning stone materials.

FASSANET 160



160 g/m² alkali-resistant fibreglass reinforcing mesh, 4.15x3.8 mm mesh size.

FX 526



Universal pigmented primer-undercoat.

RX 561



Rustic acrylic-siloxane coating with high water repellency and broad-spectrum protection against growth of algae and mould species.