

Fassa augment listed building with its thermal render solution

# PROJECT OAK CASE STUDY



**FASSA NATIONAL SPECIFICATION MANAGER**

Stephen Gore

**PROJECT**

Project Oak, Cheltenham

**ARCHITECT**

Roberts Limbrick

**CLIENT**

Spirax Sarco Engineering

**FASSA  
BORTOLO**

# PROJECT OAK CHELTENHAM

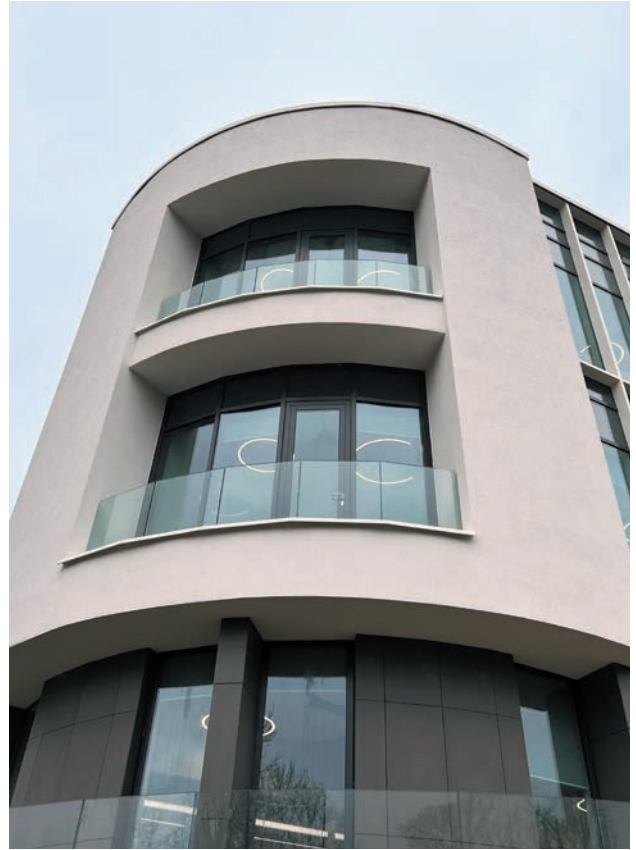
**Fassa Bortolo, the forefront Italian render manufacturer, has recently provided its expertise to the completion of Project Oak, the new four-storey global headquarters for Spirax Sarco Engineering in Cheltenham.**

Tasked with augmenting the existing listed building, Charlton House, which has served as the headquarters

for over eight decades, Fassa Bortolo undertook the construction of a curved extension to complement the historic structure. This innovative addition boasts 180 workstations, a gym, and an auditorium, embodying modern functionality within a heritage context.

For the external rendering, Fassa Bortolo deployed its state-of-the-art Fassatherm system, specifically the





Fassatherm Frame Plus system, certified by Kiwa BDA. This system, renowned for its efficiency, utilises A 96 adhesive along with mineral wool insulation, ensuring both thermal performance and structural integrity.

The finishing coat, was the application of RX 561 acrylic-siloxane top coat. This not only ensures a flawless finish, but also provides essential protection against environmental elements.

**... the project's architectural finesse is paralleled by its commitment to sustainability, achieving an esteemed BREEAM 'Outstanding' accreditation**



Designed by Roberts Limbrick, the project's architectural finesse is paralleled by its commitment to sustainability, achieving an esteemed BREEAM 'Outstanding' accreditation, a testament to its positioning among the top 0.5% of sustainable new builds worldwide.

In alignment with the project's ethos of efficiency and sustainability, Fassa Bortolo's involvement exemplified their commitment to delivering bespoke solutions that seamlessly integrate cutting-edge technology with architectural brilliance.



- Fassatherm Frame Plus system, certified by Kiwa BDA
- Utilises A 96 adhesive along with mineral wool insulation
- RX 561 acrylic-siloxane top coat

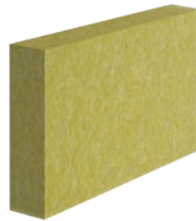


#### A 96



White and grey fibre-reinforced cementitious adhesive, grading < 1.4 mm.

#### MINERAL WOOL



Thermal insulation panels, manufactured by melting and spinning stone materials.

#### FASSANET 160



160 g/m<sup>2</sup> alkali-resistant fibreglass reinforcing mesh, 4.15x3.8 mm mesh size.

#### FX 526



Universal pigmented primer-undercoat.

#### RX 561



Rustic acrylic-siloxane coating with high water repellency and broad-spectrum protection against growth of algae and mould species.



**FASSA UK Ltd**

Fassa House, Ashchurch Business Centre,  
Alexandra Way, Ashchurch, Tewkesbury GL20 8TD  
[www.fassabortolo.com](http://www.fassabortolo.com)

**ORDERS**

[orders.uk@fassabortolo.com](mailto:orders.uk@fassabortolo.com)  
Tel. +44 (0)1684 212272

**SALES ENQUIRIES**

[info.fassauk@fassabortolo.com](mailto:info.fassauk@fassabortolo.com)  
Tel. +44 (0)1684 218305

**TECHNICAL ASSISTANCE**

[technical.assistance@fassabortolo.com](mailto:technical.assistance@fassabortolo.com)

