

A YEAR OF COLORS

EXTERIOR TOP COLLECTION





Page 6

AIR



Page 8

INDUSTRIAL



Page 10

SABLE



Page 12

EPOQUE



Page 14

LIBERTY



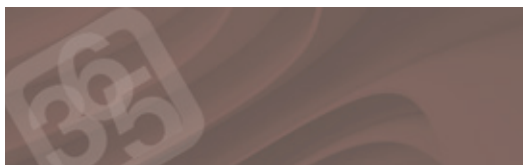
Page 16

BRITISH



Page 18

TUSCANY



365 colours like the days in a year. Colours for every season, colours... that are timeless.

“365 A Year of Colours” is the result of research conducted by expert colour designers appointed by FASSA BORTOLO, who created a collection which stretches from typical shades inspired by tradition - renovation, restoration and historical recovery - to colours that are also ideal for use in modern architecture.

The range, divided into 7 sections based on different colour trends, also provides designers with the opportunity of working in absolute safety and with maximum freedom of expression:

- to make direct comparisons between tones and strengths of colour that belong to the same section;
- to better assess the effect of decorations obtained with the “tone-on-tone” technique;
- to create polychromatic harmonies with colours coming from different sections.



Every strip contains 5 shades of a colour, identified by an alphanumeric code and a Reflectance “Y” value, which is very important for finishing products used in the External Thermal Insulation Composite System.

On the back of the strip you can find in which products the colour is reproducible and the related price range, along with relevant technical information which are necessary for the choice and the laying of the products.

GUIDE TO READING THE INFORMATION SHOWN ON THE BACK OF EACH PAGE

“Y” Reflectance index of the colour shade.

Percentage of incident light that the colour is able to reflect: the higher the value, the lighter the tonality of the colour.
(Y=0 for black; Y=100 for white).

reflectance index of the colour shade

colour code

SA36 Y=76

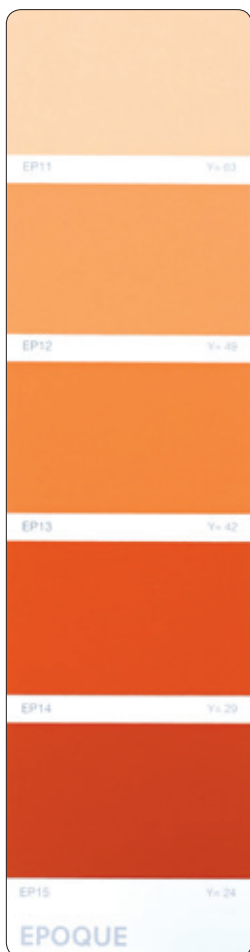
The table shows the price range (from I to V) of the various colours in relation to each product, along with other relevant technical information. The colours that are not reproducible for a given product are marked with the (---) symbol.

V price range

■ paints that need a pigmented primer with hiding power

* shades that are sensitive to sunlight

▽ shades not reproducible in a sample using the tinting machine.



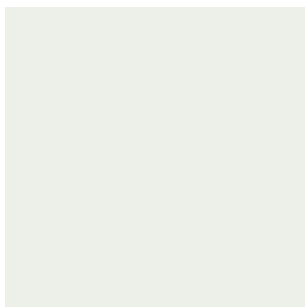
	SISTEMA EPOCÓNICO	SISTEMA ACRIL-DECO	SISTEMA ACRILICO	SISTEMA ELASTOMERICO	SISTEMA AL SILICATI
	SA36 Y=63	PS 403 Y=69	PS 403 Y=69	PS 403 Y=69	PS 403 Y=69
EP11	I	I	I	I	I
EP12	---	---	---	---	---
EP13	---	---	---	---	---
EP14	---	---	---	---	---
EP15	---	---	---	---	---

Fig. 35

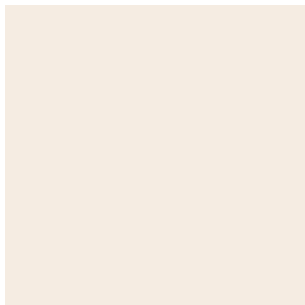
AIR

Light, pale pastel shades

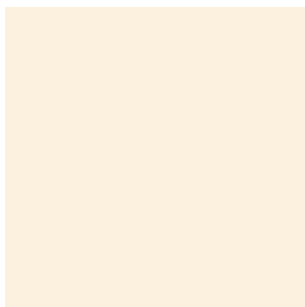




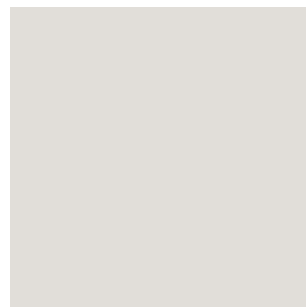
AR 01



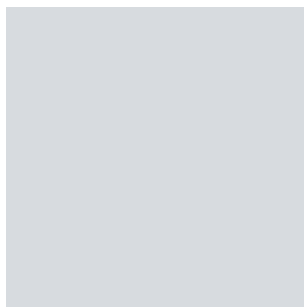
AR 09



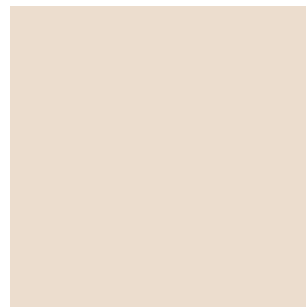
AR 12



AR 08



AR 05



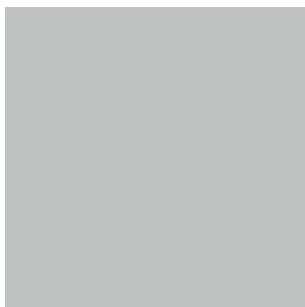
AR 11

The colours shown in this catalogue are for illustrative purposes only. For the choice of the tints, please refer to the 365 swatch book; we advise you check the shade directly through a product sample.

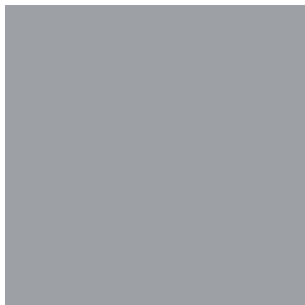
INDUSTRIAL

Cold shades with enhanced tones of grey

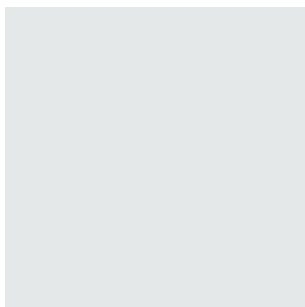




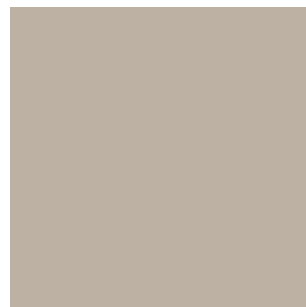
IN 53



IN 60



IN 57



IN 18



IN 09



IN 19

The colours shown in this catalogue are for illustrative purposes only. For the choice of the tints, please refer to the 365 swatch book; we advise you check the shade directly through a product sample.

SABLE

Bright sun-like colours with variable intensity





SA 08



SA 16



SA 10



SA 43



SA 32



SA 65

The colours shown in this catalogue are for illustrative purposes only. For the choice of the tints, please refer to the 365 swatch book; we advise you check the shade directly through a product sample.

EPOQUE

Warm shades characterised by the tones of orange and red





EP 54



EP 55



EP 48



EP 22



EP 14



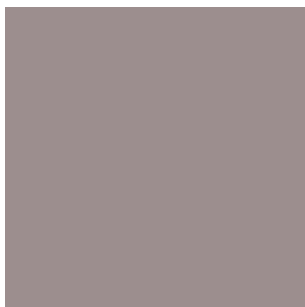
EP 34

The colours shown in this catalogue are for illustrative purposes only. For the choice of the tints, please refer to the 365 swatch book; we advise you check the shade directly through a product sample.

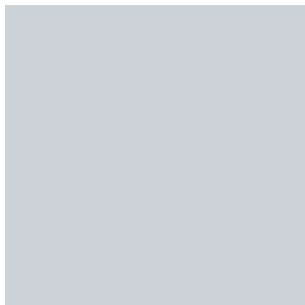
LIBERTY

Purple hues with a hint of amethyst, mauve and special shades as ash grey





LR 05



LR 11



LR 20



LR 28



LR 39



LR 40

The colours shown in this catalogue are for illustrative purposes only. For the choice of the tints, please refer to the 365 swatch book; we advise you check the shade directly through a product sample.

BRITISH

Tints in various shades of green





BT 52



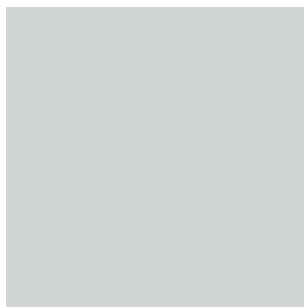
BT 39



BT 43



BT 13



BT 01



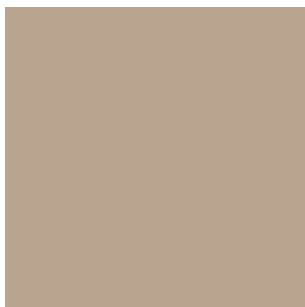
BT 15

The colours shown in this catalogue are for illustrative purposes only. For the choice of the tints, please refer to the 365 swatch book; we advise you check the shade directly through a product sample.

TUSCANY

Shades from beige to brown

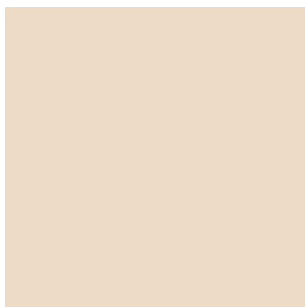




TS 13



TS 38



TS 01



TS 18



TS 30



TS 21

The colours shown in this catalogue are for illustrative purposes only. For the choice of the tints, please refer to the 365 swatch book; we advise you check the shade directly through a product sample.

