



Paint System

The right colour for every environment.

**FASSA
BORTOLO**
QUALITY FOR BUILDING

A SIMPLE AND COMPLETE GUIDE.

Simplicity and completeness are the cornerstones of the Fassa Bortolo Paint System. This guide is intended to be an additional tool for professional painters, providing all the useful information needed to correctly use the various systems. For each System, we offer suggestions on the application cycles and

corresponding products, plus details on the main features and technical characteristics of each product. The product descriptions are complete with symbols that denote the certification standards and paint mixing system, as well as handy and intuitive icons as guides for correct application.



French Label

Classification and labelling system applied to emissions of Volatile Organic Compounds (VOCs) from construction products.



European Technical Approval (ETA)

European Technical Approval ETA 07/0280, ETA 09/0282, ETA 13/0532 and ETA 16/0932 attest the products' technical suitability, based on compliance with all the requirements of the ETAG 004 guidelines.



British Board of Agrément (BBA)

The British Board of Agrément (BBA) has awarded certification to the Fassatherm External Thermal Insulation Composite System. BBA certification was a necessary requirement to extend the offering of the Fassatherm External Thermal Insulation Composite System, already with European Technical Approval (ETA), specifically to the British market.



VOC directive

All of the products in the Fassa Bortolo Paint System meet the parameters set by European Union regulations aimed at limiting emissions of organic compounds.



UNI 11021:2002

UNI 11021:2002 specifies the requirements and corresponding test methods for paints and varnishes used in rooms with the presence of foodstuffs.



ColorLife Paint Mixing System

Products that can be tinted using the ColorLife paint mixing system



in-living *paints*

Products that can be tinted using the selection of colours from the almost 2,000 available in the ColorLife paint mixing system.



365 - A YEAR OF COLORS

Products that can be tinted using the selection of colours available on the Fassa colour chart for exteriors, made using the ColorLife paint mixing system.



product for interiors



product for exteriors



product for interiors/exterior



application by brush



application by roller



application by spray



spray



sponge float



metal trowel



plastic trowel



glove

SUMMARY OF THE SYSTEMS

SFIDE D'ARTE

p. 10

RICORDI Materia

Moulded forms p. 12

RICORDI Marmo

Natural stone p. 12

RICORDI Stucco

Reflections of an époque p. 13

RICORDI Calce a Pennello

Timeless art p. 13

DESIDERI Luce

Moon beams p. 14

DESIDERI Perla

Precious silk p. 14

DESIDERI Cristallo

Star dust p. 15

DESIDERI Minerale

Opaque simplicity p. 15

DESIDERI Velo

Vintage flavours p. 16

DESIDERI Protettivo

p. 16

GREEN VOCation

p. 18

MIKROS 001

Wall primer in water microemulsion p. 21

SPHAERA 001

Water-based paint for interiors with hollow ceramic microspheres p. 21

EVOC 001 MATT - SATIN

Water-based paint for interiors p. 22

POTHOS 003

Anti-pollution water-based paint for interiors p. 23

OCEAN 001

Washable water-based paint with a very low VOC content p. 24

EOS 001

Highly breathable water-based paint with a very low VOC content p. 24

APPLICATION CYCLES

p. 25



SILICONE RESIN SYSTEM

p. 28

FS 412

Primer for silicone-resin cycles p. 30

F 482I

Filler undercoat with fine plaster effect p. 30

PS 403

Highly breathable finish p. 31

SKIN 432

Protective siloxane finish p. 31

RSR 421

Silicone resin coating with rustic finish p. 32

APPLICATION CYCLES

p. 33



ACRYLIC SILOXANE SYSTEM

p. 36

FX 526

Universal pigmented primer-undercoat p. 38

PX 505

Acrylic siloxane filling finish p. 38

RX 561

Acrylic siloxane protective coating p. 39

APPLICATION CYCLES

p. 40



ACRYLIC SYSTEM

p. 42

FA 249

Primer for acrylic systems p. 44

PIGMENTO 013

Pigmented undercoat for interiors p. 44

F 263A

Filler undercoat with plaster effect, for exteriors and interiors p. 45

LV 207 VELVET

Super-washable water-based flat paint p. 46

GYPSOPAINT

Water-based covering paint ideal for plasterboard p. 46

PB 260 ACTIVE
Water-based paint with protective film p. 47

ACTIVE ONE
Detergent solution for cleaning masonry surfaces p. 47

PL 215
Washable water-based flat paint p. 48

PT 213
Water-based paint with high hiding power p. 48

PI 209
Universal water-based paint p. 49

RI 222
Decorative and protective rustic coating for interiors p. 49

PM 298
Water-based breathable paint for professional use p. 50

P 200
Water-based wall paint p. 50

PG 288 PROTECT
super-washable smooth flat finish p. 51

C 285 BETON-E
Protective elastomer finish for concrete p. 51

PA 202 ACTIVE
Protective filling finish p. 52

MR 287
Water-based paint with excellent filling properties for exteriors p. 52

RTA 549
Acrylic protective coating p. 53

RAR 256
Acrylic coating with rustic finish p. 53

APPLICATION CYCLES p. 54

SILICATE SYSTEM p. 60

FASSIL F 328
Silicate primer p. 62

FASSIL F 357S
Filler undercoat with plaster effect, for exteriors and interiors p. 62

FASSIL P 313
Smooth water-based silicate paint p. 63

FASSIL R 336
Silicate coating with rustic finish p. 63

APPLICATION CYCLES p. 64

DECORCALCE SYSTEM p. 66

I 133
Fine mineral lime-based decorative plaster p. 68

LS 122
Mineral lime-based smooth coat with satin finish p. 68

ELASTOMER SYSTEM p. 70

FOND-ELAST 223
Elastomer levelling undercoat with fine plaster effect p. 72

PE 224 ELAST
Elastomer filling finish p. 72

RI-ELAST 225
Elastomer coating with rustic finish p. 73

APPLICATION CYCLES p. 74

COMPLEMENTARY PRODUCTS p. 76

SOL-FIX 211
Solvent-based acrylic primer p. 78

IS 510
Siloxane water-repellent p. 78

FAST 299
Stucco paste p. 79

PAC 272
Primer made from synthetic resins p. 79

ACTIVE ONE
Detergent solution for cleaning masonry surfaces p. 80



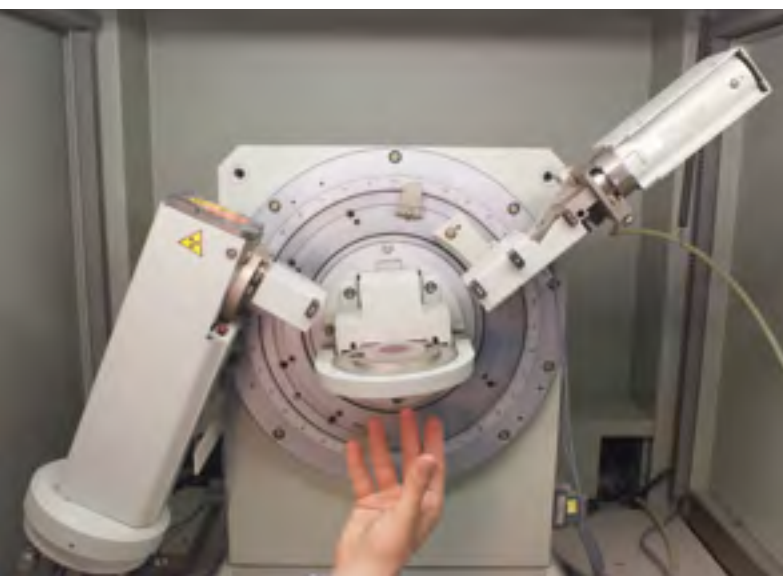
FOR US, RESEARCH IS A FUNDAMENTAL ASSET.

Our research is focused on producing quality. Through the constant commitment of our Research Centre we identify the most technologically-innovative solutions, so as to expand the horizons of our products. Investing in research is essential for any company that wants to constantly improve its performance.

This is why we operate our own Research Centre, an advanced laboratory with a wide range of instruments and equipment.

The objective is to analyse materials at a microscopic level and identify their chemical-physical properties, so as to be able to select the formulations that best

guarantee the quality of our products, and predict, using specific tests, their behaviour in a variety of environmental conditions. The attention we dedicate every day to research has also been recognised by ISO 9001:2008 certification. Just another demonstration, for us, of the superior quality we offer the building sector in this area too. What's more, our paint mixing department is completely automated, with all our resources being constantly dedicated to improving the quality of our products and assuring our promised delivery times. So as to always guarantee the best possible results.



COLORLIFE, THE NEW PAINT MIXING SYSTEM.

The experience we have acquired in the paints business has led to the development of a new, advanced paint mixing system. Today the new ColorLife paint mixing system, with the addition of six new organic colourant pastes for interiors, allows customers to choose the exact shade of colour required, from the 1950 tints available. ColorLife is based on the NCS (Natural Color System®),

The new ColorLife paint mixing system comprises 19 colourant pastes, 13 for exteriors and 6 for interiors. As a result:

- less space taken up in the store by colourant pastes
- lower management and maintenance costs
- more flexibility
- colourants remain less time inside the canisters
- distribution of colourants based on consumption

the most widely used system around the world by manufacturers, architects and designers that codifies colours based on how they are perceived by the human eye.

A chart with 1950 colours that, together with the colour charts for interiors (in-living) and exteriors (365 - A YEAR OF COLORS), make the Fassa Paint System the most complete solution for every project.

Our research has allowed us to “condense” the entire range of 1950 colours on the NCS® chart into just six new colourant pastes for interiors, with excellent colorimetric values. The ColorLife paint mixing system meets all of these needs. Special software makes identifying and saving the chosen colour extremely simple.



COLORLIFE



COLOUR CHART FOR INTERIORS

in-living *paints*

The new in-living project is dedicated specifically to interior paints and finishes. The importance of colour in our homes goes well beyond mere appearance. Colour has a direct effect on the home environment, and determines the psychological and physical wellbeing of the entire family. Colour has a great emotional power. In a lounge, bedroom or any other room in the home, colour, above all else, is what offers us the sensations we desire when we find ourselves in that room.

in-living offers a wide selection of tints, extracted from almost 2,000 that can be reproduced using

Fassa Bortolo's ColorLife paint mixing system. In keeping with the concept that "colour = emotion = personal wellbeing", Living offers a wide range of suggestions and colour matches. You can be sure of finding the right one for you. The chart features 9 sections of colours, divided into Pure, Light, Sunny, Fragrance, Fresh, Land, Natural, Precious and Tech.

The perfect tool for designers, giving them inspiration for their projects, as well as a tool that lets businesses and decorators work with customers in making the final decision.



365 COLOURS, JUST LIKE THE DAYS IN A YEAR. Colours for every season, timeless colours

“365 - A YEAR OF COLORS” is the result of studies conducted by experts colour, assigned by FASSA BORTOLO the task of creating a collection that, based on the typically colour combinations of traditional historical restoration and reconstruction work, has been extended to comprise colours that are also ideal for modern architecture.

The seven different sections relate to the different colour trends, and offer designers the possibility

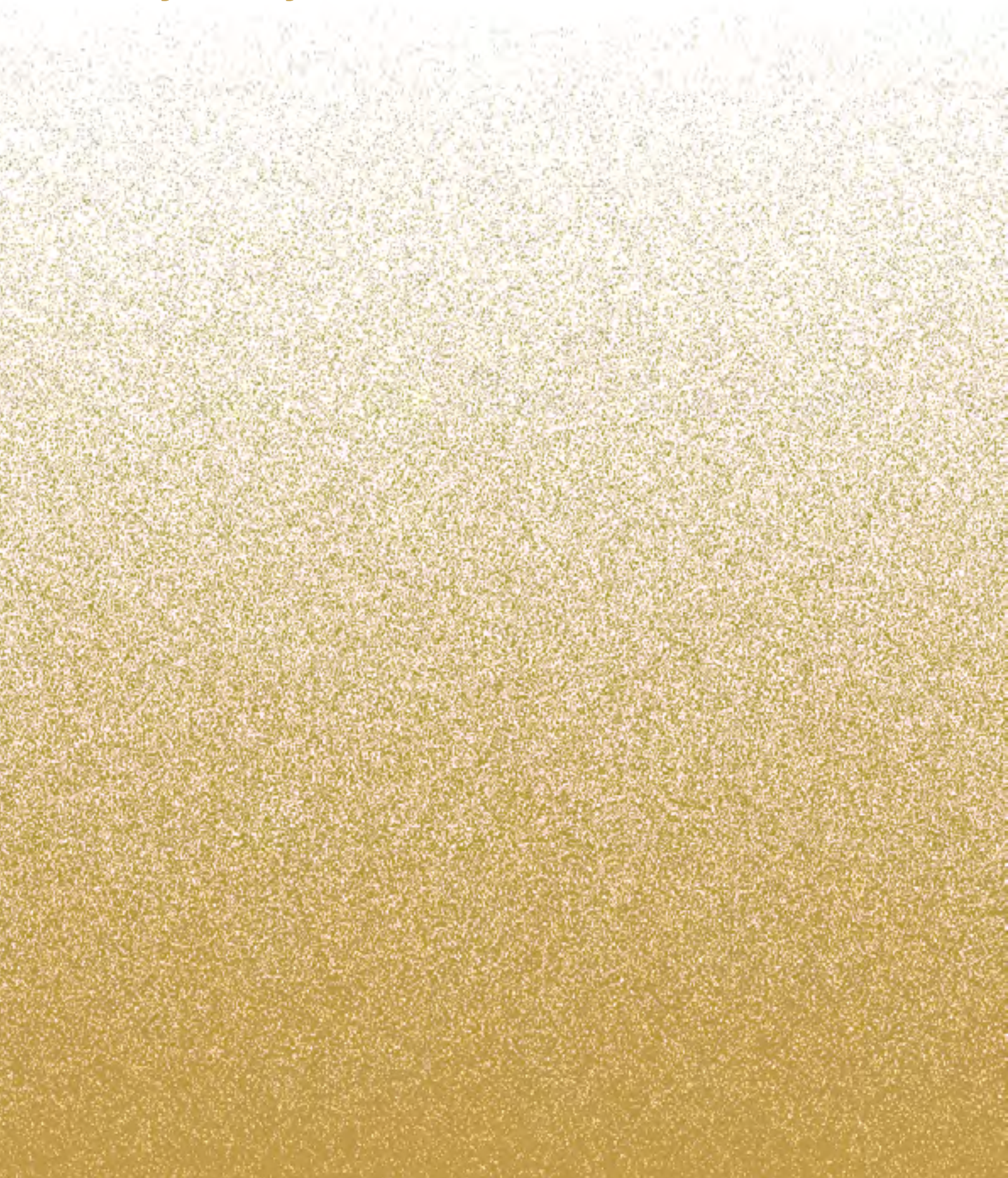
to work with complete confidence and maximum expressional freedom:

- making direct comparisons between colour intensities and tones in the same section;
- allowing better evaluation of the effect of decorations with matching colour tones;
- creating chromatic harmony between colours from different sections.



SFIDE D'ARTE

Free your style



SFIDE D'ARTE

SFIDE D'ARTE is the ambitious new project involving a line of decorative finishes for interiors, designed to enrich, enhance and improve the quality of the spaces we live in. SFIDE D'ARTE allows environments to be personalised with colours spanning from neutral to bright tones, from minimalist to more eccentric shadow effects. The wall comes to life through a series of material effects: travertine, marmorino, cement, scratch... creativity knows no limits.

- DECORATIVE FINISHES
- FOR BOTH CLASSIC- AND MODERN-STYLE BUILDINGS
- VAST CHOICE OF COLOURS
- WIDE RANGE OF POSSIBLE EFFECTS

DECORATIVE FINISHES

RICORDI Materia	p. 12
RICORDI Marmo	p. 12
RICORDI Stucco	p. 13
RICORDI Calce a pennello	p. 13
DESIDERI Luce	p. 14
DESIDERI Perla	p. 14
DESIDERI Cristallo	p. 15
DESIDERI Minerale	p. 15
DESIDERI Velo	p. 16
DESIDERI Protettivo	p. 16

RICORDI MATERIA

MOULDED FORMS



RICORDI Materia is a mineral-based decorative coating for interiors made from superior cured lime putty, variably graded crushed marble and pigments. RICORDI Materia, featuring very high breathability, is mainly used for decorating the interiors of buildings, including those of artistic importance. It allows the creation of a multitude of effects depending on how it is worked and applied by the decorator: material effect, compact effect, cement effect, scratch effect and travertine effect.

BENEFITS & FEATURES

- Superior cured lime putty
- Very high breathability
- A multitude of decorative effects

SPECIFIC WEIGHT	approx. 1.68 kg/l
GRADING	< 0.7 mm
YIELD	approx. 2.5-3.0 kg/m ² in two layers, finished
PACK	20 - 5 - 2.5 kg
COLOUR	RICORDI Materia chart

RICORDI MARMO

NATURAL STONE



RICORDI Marmo is a mineral-based natural decorative finish for interiors, with a satin appearance, made from superior cured lime putty, very fine crushed marble and pigments. RICORDI Marmo features very high breathability, and is ideal for decorating the interiors of historically and artistically important buildings. Featuring excellent filling power, it allows the creation of smooth and satin surfaces, with the tones of marble and interesting shadow and compact effects, in a multitude of colours: from shades of grey to neutral tones, spanning the different shadow effects.

BENEFITS & FEATURES

- With very fine crushed marble
- Satin appearance
- Shadow and compact effects

SPECIFIC WEIGHT	approx. 1.64 kg/l
GRADING	< 0.4 mm
YIELD	2.0-2.5 kg/m ² finished
PACK	20 - 5 - 2.5 kg
COLOUR	RICORDI Marmo chart

For information on using the products correctly, see the datasheets.

RICORDI STUCCO

REFLECTIONS OF AN ÉPOQUE



RICORDI Stucco is a mineral-based natural decorative finish with a polished appearance for interiors, made from superior cured lime putty, very fine graded limestone aggregate and pigments. RICORDI Stucco is suitable above all for decorating the interiors of buildings of historical-artistic importance, to highlight the aesthetic features while at the same time ensuring very high breathability. It is used to create smooth, polished surfaces with elegant shadow effects, in a multitude of colours and tones.

BENEFITS & FEATURES

- Smooth and polished surfaces
- Very high breathability
- Elegant shadow effects

SPECIFIC WEIGHT	approx. 1.47 kg/l
GRADING	fine product
YIELD	1.0-1.2 kg/m ² finished work
PACK	20 - 5 - 2.5 kg
COLOUR	RICORDI Stucco chart

RICORDI CALCE A PENNELLO

TIMELESS ART



RICORDI CALCE A PENNELLO is a mineral decorative paint giving a smooth, flat finish, made from selected, superior pure natural lime paste. It is used as a mineral decorative finish for interiors and exteriors, ideal for restoration work on historically and artistically important buildings, creating decorations with a shaded and antique appearance. The use of mineral-based raw materials ensures a finish with high breathability, while the moisture regulating properties of natural lime mean RICORDI CALCE A PENNELLO improves well-being and creates a comfortable indoor environment.

BENEFITS & FEATURES

- Mineral finish
- Shaded and antique appearance
- Very high breathability
- For interiors and exteriors
- Easy to use

SPECIFIC WEIGHT	approx. 1.30 kg/l
DILUTION IN WATER BY WEIGHT	First coat up to 30%. Second up to 20%.
YIELD	4-5 m ² /l for finished work, 2 coats
PACK	14, 4 and 1 litre
COLOUR	selection from the colour chart: 365 A YEAR OF COLORS

DESIDERI LUCE

MOON BEAMS



DESIDERI Luce is a decorative paint with mother-of-pearl effect made using precious pearlescent pigments, ideal for decorating interiors in classic or modern style. It is used to create finishes with a gold and silver metallic appearance, creating pleasant light-dark effects that vary depending on how the material is applied and the angle of incident-reflected light on the walls.

BENEFITS & FEATURES

- Metallic appearance
- Gold and silver finishes
- Easy to use

DESIDERI PERLA

PRECIOUS SILK



DESIDERI Perla is a smooth and silky decorative finish giving an iridescent effect, used for interior decoration. Depending on the technique used, a classic and antique or modern and metallic appearance can be obtained. These are used when needing to give the wall a smooth silky and iridescent appearance. The chromatic effect of the surfaces seems to change with the angle of incident-reflected light; in addition, perception of the effect will vary depending on where the observer is standing.

BENEFITS & FEATURES

- Iridescent finishes
- Smooth, silky and iridescent appearance
- Easy to use

SPECIFIC WEIGHT	approx. 1.20 kg/l
GRADING	fine
WET-SCRUB RESISTANCE	Class 2
DILUTION IN WATER BY WEIGHT	ready to use; it can be diluted with a maximum of 5% water. Only if applying on RICORDI Materia, DESIDERI Luce should be diluted by around 30%
YIELD	7-10 m ² /l in two layers
PACK	2.5 l (silver base) and 1 l (silver base and gold base)
COLOUR	DESIDERI Luce chart

SPECIFIC WEIGHT	approx. 1.20 kg/l
GRADING	fine
WET-SCRUB RESISTANCE	Class 2
DILUTION IN WATER BY WEIGHT	ready to use; it can be diluted with a maximum of 5% water. Only if applying on RICORDI Materia, DESIDERI Perla should be diluted by around 30%
YIELD	4-6 m ² /l in 2 coats
PACK	2.5 l and 1 l (silver base)
COLOUR	DESIDERI Perla chart

For information on using the products correctly, see the datasheets.

DESIDERI CRISTALLO

STAR DUST



DESIDERI Cristallo is a finish with a sandy metallic effect, ideal for decorating interiors in classic or modern style. It is used to create particularly glossy finishes, with a rough and metallic appearance and pleasant light-dark effects that vary depending on how the material is applied and the angle of incident-reflected light on the walls.

BENEFITS & FEATURES

- Finishes with a sandy effect
- Glossy, metallic appearance
- Easy to use

DESIDERI MINERALE

OPAQUE SIMPLICITY



DESIDERI Minerale is a matt decorative paint, rough to touch and slightly pearlescent, ideal for decorating interiors in classic or modern style. It is used to create decorative finishes that are quick and easy to apply, with a matt and pleasantly shaded appearance.

BENEFITS & FEATURES

- Flat appearance
- Finishes that are rough to touch
- Easy and quick to use

SPECIFIC WEIGHT	approx. 1.34 kg/l
GRADING	medium
WET-SCRUB RESISTANCE	Class 2
DILUTION IN WATER BY WEIGHT	ready to use; it can be diluted with a maximum of 5% water.
YIELD	7-10 m ² /l in one coat
PACK	2.5 l and 1 l (silver base)
COLOUR	DESIDERI Cristallo chart

SPECIFIC WEIGHT	approx. 1.30 kg/l
GRADING	medium
WET-SCRUB RESISTANCE	Class 2
DILUTION IN WATER BY WEIGHT	ready to use; it can be diluted with a maximum of 5% water.
YIELD	7-10 m ² /l in one coat
PACK	5 l and 1 l (white/pastel base)
COLOUR	DESIDERI Minerale chart

DESIDERI VELO

VINTAGE FLAVOURS



DESIDERI Velo is a water-based acrylic-siloxane decorative finish giving an antique effect. Used for decorating exterior and interior walls of buildings in a classic or modern style, when wanting to give the masonry work an antique appearance with glazed, clouded and shaded effects.

BENEFITS & FEATURES

- Antique appearance with shaded effects
- For interiors and exteriors
- Easy to use

DESIDERI PROTETTIVO

TRANSPARENT PROTECTIVE COATING FOR DECORATIVE PRODUCTS



DESIDERI PROTETTIVO is a highly-washable transparent finish with a satin appearance. It is used to provide greater protection and resistance to surfaces decorated using RICORDI MATERIA and DESIDERI line products, without appreciably altering the original aesthetic effect. Once having dried, DESIDERI PROTETTIVO creates a hard protective layer with good resistance to normal household detergents, thus protecting the precious decorative effects below it.

BENEFITS & FEATURES

- Satin appearance
- Excellent workability
- Hardness and resistance to household detergents
- Does not alter the underlying decorative effect
- For interiors

SPECIFIC WEIGHT	approx. 1.00 kg/l
GRADING	fine
WET-SCRUB RESISTANCE	Class 2
DILUTION IN WATER BY WEIGHT	dilution between 60% and 80%
YIELD	20 – 25 m ² /l in one coat
PACK	5 and 1 l neutral base
COLOUR	DESIDERI Velo chart

SPECIFIC WEIGHT	approx. 1.03 kg/l
DILUTION IN WATER BY WEIGHT	Ready-to-use. On RICORDI MATERIA, the first coat of product must be diluted 30% by weight in water, while the subsequent coats are applied as-is.
YIELD	12-14 m ² /l in one coat
PACK	1 l
COLOUR	transparent

For information on using the products correctly, see the datasheets.



GREEN VOCation®

Wealth all around



GREEN VOCation

The GREEN VOCation finishes are designed according to the most modern concepts, with maximum respect for private users, professional decorators and the environment. Formulated with a low volatile organic compound content, they are odourless both during and after application. Unlike traditional water-based paints, the rooms do not need to be ventilated for a long time before being occupied. They also guarantee high performance, with high-quality end results. Indeed, they offer the perfect combination of the best technical-applicational characteristics: hiding power, yield, gloss, easy application, odourless.

- PRODUCTS FOR INTERIORS
- SOLVENT-FREE
- VERY LOW VOC CONTENT
- EASY TO APPLY
- ODOURLESS DURING AND AFTER APPLICATION

UNDERCOATS

MIKROS 001 p. 21

FINISHES FOR INTERIORS

SPHAERA 001 p. 21
EVOC 001 MATT - SATIN p. 22
POTHOS 003 p. 23
OCEAN 001 p. 24
EOS 001 p. 24

APPLICATION CYCLES p. 25

GREEN VOCation: SOLVENT-FREE PRODUCTS

The formulation of GREEN VOCation products does not include organic solvents, plasticisers or formaldehyde donors. GREEN VOCation paints and products have a very low VOC (volatile organic compound) content. VOCs, due to their chemical properties, are responsible for certain forms of

atmospheric pollution and can harm the health. As a result, both the European Union and the individual member states have decided to establish maximum limits for VOC content, in order to reduce the quantity emitted into the air.

The GREEN VOCation line of products have a VOC content that is much lower than the limits specified by law.



MIKROS 001

WALL PRIMER
IN WATER MICROEMULSION



MIKROS 001 is a solvent free water-dilutable primer with extremely low VOC emissions, transparent and odourless, made from special acrylic copolymers in water microemulsion. It is used as a primer for interior and exterior walls; it ensures high penetration and impregnation of the substrate, making application easier and ensuring more uniform absorption of the subsequent coats of finish coat products.

BENEFITS & FEATURES

- Solvent free
- Microemulsion
- Uniform absorption
- High penetrating power

SPECIFIC WEIGHT	approx. 1.00 kg/l
DILUTION IN WATER BY WEIGHT	from 50% to 100% on absorbent substrates such as gypsum and plasterboard; from 100% to 200% on lime and lime/cement plasters; from 200% to 300% on concrete
YIELD	approx. 8-14 m ² /l depending on substrate absorption
PACK	4 and 12 litres
COLOUR	transparent

SPHAERA 001

WATER-BASED PAINT FOR
INTERIORS WITH HOLLOW
CERAMIC MICROSPHERES



SPHAERA 001 is a solvent-free washable water-based protective and decorative paint for interiors, with a very low volatile organic compound content. It is made using special hollow ceramic microspheres, which increase sound insulation and reduce surface condensation, consequently improving indoor comfort; acting in synergy with special additives, these help slow down the growth of mould on walls, improving indoor quality, especially in damp environments or places where surface condensation may form, such as kitchens, bathrooms, laundries, basements, etc.

BENEFITS & FEATURES

- Solvent free
- Ceramic microspheres
- Product with broad-spectrum protection against growth of mould species
- Maximum indoor comfort

SPECIFIC WEIGHT	approx. 1.15 kg/l
GRADING	medium
GLOSS	dead flat
CONTRAST RATIO	Class 1 (with a yield of 3.0 m ² /l)
WET-SCRUB RESISTANCE	Class 2 (8-9 microns)
DILUTION IN WATER BY WEIGHT	undercoat or middle coat, maximum 10%; finish coat, maximum 5%.
YIELD ON SMOOTH SUBSTRATES	5.7-7.1 m ² /l (2 coats)
YIELD ON FLOAT-FINISH SUBSTRATES	2.8-3.5 m ² /l (2 coats)
PACK	4 and 12 l
COLOURS	white + selection from in-living paints colour chart

EVOC 001 MATT/SATIN



ODOURLESS WATER-BASED ENAMEL
WALL PAINT FOR INTERIORS



EVOC 001 is a water-based enamel paint for interiors, formulated using raw materials with a low environmental impact. Odourless, and with extremely low VOC emissions, it is suitable for painting spaces where food is handled, in accordance with UNI 11021:2002. Used above all in environments subject to food safety regulations (i.e. HACCP protocol: restaurants, bars, canteens etc.) where a high standard of hygiene and complete washability of the surfaces need to be guaranteed. The special formulation in fact ensures a film of paint is created that can be completely cleaned and is resistant to abrasion. EVOC 001 is available in the flat version (EVOC 001 MATT) and with satin finish (EVOC 001 SATIN).

BENEFITS & FEATURES

- Solvent free
- Odourless
- Easy to clean and good scratch resistance
- Suitable for environments where food is prepared or consumed in accordance with UNI 11021:2002
- Excellent coverage

SPECIFIC WEIGHT	EVOC 001 MATT approx. 1.37 kg/l EVOC 001 SATIN approx. 1.29 kg/l	DILUTION IN WATER BY WEIGHT	first coat 5-10%, subsequent coats 0-5%
GRADING	fine	YIELD ON ROUGH SUBSTRATES	from approx. 4.5 to 5.5 m ² /l (2 coats)
GLOSS	flat - satin	YIELD ON SMOOTH SUBSTRATES	from approx. 9.5 a 10.5 m ² /l (2 coats)
CONTRAST RATIO	EVOC 001 MATT Class 3 (with a yield of 7.5 m ² /l) EVOC 001 SATIN Class 3 (with a yield of 7.7 m ² /l)	PACK	2.5 and 10 l
WET-SCRUB RESISTANCE	Class 1	COLOURS	white + selection from in-living <i>paints</i> colour chart

POTHOS 003

ANTI-POLLUTION WATER-BASED
PAINT FOR INTERIORS



POTHOS 003 is an innovative water-based paint for interiors with a very low volatile organic compound content, able to capture the formaldehyde present in the rooms and transform it into stable, harmless compounds. Tests show how a surface coated with POTHOS 003 reduces the amount of free formaldehyde in the environment by 70%. Its life span is estimated to be around 10 years.

BENEFITS & FEATURES

- Immediate action in just 24 hours
- Prevents pollution
- Reduces the amount of formaldehyde in indoor spaces
- Super flat appearance with good coverage

SPECIFIC WEIGHT	approx. 1.48 kg/l
GRADING	fine
GLOSS	dead flat
CONTRAST RATIO	Class 1 (with a yield of 6.0 m ² /l)
WET-SCRUB RESISTANCE	Class 2

DILUTION IN WATER BY WEIGHT	undercoat or middle coat 10%, finish coat 10-15%
YIELD	from approx. 5.0 to 7.0 m ² /l (2 coats) for finished work
PACK	4 and 10 l
COLOURS	white

OCEAN 001

WASHABLE WATER-BASED PAINT FOR INTERIORS WITH A VERY LOW VOC CONTENT



OCEAN 001 is a new-concept water-based paint, formulated especially to safeguard human health and the environment. It has a very low volatile organic compound content and is very easy to clean. It is odourless both during and after application, meaning the painted environments do not need to be ventilated before being occupied. Featuring easy application and good expansion, the raw materials used create surfaces that have a pleasant flat and silky effect and are easy to clean.

BENEFITS & FEATURES

- Solvent free
- Easy to clean
- Odourless
- Flat and silky appearance

SPECIFIC WEIGHT	approx. 1.47 kg/l
GRADING	fine
GLOSS	dead flat
CONTRAST RATIO	Class 2 (with a yield of 5.9 m ² /l)
WET-SCRUB RESISTANCE	Class 2
DILUTION IN WATER BY WEIGHT	by brush or airless sprayer: 15-20% by roller: 10-15%
YIELD	Substrate with fine plaster finish coat: approx. 4-5 m ² /l for finished work (2 coats) Smooth substrate, such as plasterboard: approx. 7-8 m ² /l for finished work (2 coats)
PACK	4 and 12 l
COLOURS	white + selection from in-living paints colour chart

EOS 001

HIGHLY BREATHABLE WATER-BASED PAINT WITH A VERY LOW VOC CONTENT



EOS 001 is a new-concept water-based paint, formulated especially to safeguard human health and the environment. It has a very low volatile organic compound content and ensures very high breathability. It is odourless both during and after application, meaning the painted environments do not need to be ventilated before being occupied. The raw materials used ensure exceptional surface coverage and easy application, guaranteeing perfect uniformity.

BENEFITS & FEATURES

- Solvent free
- Very high breathability
- Odourless
- Excellent hiding power

SPECIFIC WEIGHT	approx. 1.67 kg/l
GRADING	fine
GLOSS	dead flat
CONTRAST RATIO	Class 1 (with a yield of 4.5 m ² /l)
WET-SCRUB RESISTANCE	Class 5
DILUTION IN WATER BY WEIGHT	by brush or airless sprayer: 25-30% by roller: 20-25%
YIELD	Substrate with fine plaster finish coat: approx. 4-5 m ² /l for finished work (2 coats) Smooth substrate, such as plasterboard: approx. 7-8 m ² /l for finished work (2 coats)
PACK	4 and 12 litres
COLOURS	white + selection from in-living paints colour chart

ANTI-POLLUTION FINISH COAT CYCLE FOR INTERIORS

Cycle suitable for those wanting to **reduce indoor pollution** in the home. Innovative formulation able to **immediately capture the formaldehyde** in the room and transform it into stable,

harmless compounds. The action of POTHOS 003 may last even up to **10 years**.

UNDERCOAT



MIKROS 001

Wall primer in water microemulsion



FINISH FOR INTERIORS



POTHOS 003

Anti-pollution water-based paint for interiors



FINISH COAT CYCLE FOR INTERIORS SOLVENT FREE, SUPER-WASHABLE, VERY HIGH HACCP LEVEL

Cycle suitable for environments such as kitchens, hotels, kindergartens, places where **food is processed** and with **high occupancy levels**. After applying **MIKROS 001** water-dilutable primer, slightly irregular substrates can be rendered or

smoothed off using **FAST 299**, stucco paste, before applying **EVOC 001 (MATT/SATIN)** water-based enamel paint (**MATT-SATIN**).

UNDERCOAT



MIKROS 001

Wall primer in water microemulsion



COMPLEMENTARY PRODUCT



FAST 299

Stucco paste



FINISH FOR INTERIORS



EVOC 001 MATT/SATIN

Odourless water-based enamel wall paint for interiors

FINISH COAT CYCLE FOR INTERIORS SOLVENT FREE, FOR BUILDINGS WITH THERMAL BRIDGES AND SURFACE CONDENSATION

Cycle suitable for environments with the presence of mould due to **thermal bridges** or walls facing north where **condensate may form**. Apply **MIKROS 001** water-dilutable

primer and, subsequently, **SPHAERA 001** to help **stop mould from spreading** on the walls, thus improving indoor quality.

UNDERCOAT



MIKROS 001
Wall primer in water
microemulsion



FINISH FOR INTERIORS



SPHAERA 001
Water-based paint
for interiors with
hollow ceramic
microspheres

FINISH COAT CYCLE FOR INTERIORS SOLVENT FREE, WASHABLE

Cycle suitable for places with **high occupancy levels**. Apply **MIKROS 001** water-dilutable primer and, subsequently,

OCEAN 001, washable water-based paint, featuring a very low volatile organic compound content and **good cleanability**.

UNDERCOAT



MIKROS 001
Wall primer in water
microemulsion



FINISH FOR INTERIORS



OCEAN 001
Washable water-
based paint with
a very low VOC
content



SILICONE RESIN SYSTEM

The top of the range.

Excellent performance: high water repellency, water vapour permeability, excellent protection for long life. The combination of these characteristics makes the Silicone Resin system products ideal for decorating plaster in restoration work, on the FASSATHERM External Thermal Insulation Composite System and all other applications where long-term protection is needed.

- VERY HIGH BREATHABILITY
- WATER-REPELLENT
- BREATHABLE
- EXCELLENT PROTECTION
- FOR EXTERNAL THERMAL INSULATION COMPOSITE SYSTEMS
- FOR RESTORATION SYSTEMS AGAINST RISING DAMP

UNDERCOATS

FS 412	p. 30
FS 482I	p. 30

FINISHES FOR EXTERIORS

PS 403	p. 31
SKIN 432	p. 31

COATINGS

RSR 421	p. 32
---------	-------

APPLICATION CYCLES	p. 33
---------------------------	-------

FS 412

PRIMER FOR SILICONE-RESIN CYCLES



FS 412 is a water-based primer-undercoat used to insulate, prepare or stabilise the substrate before applying Silicone Resin system finish coat products, without however affecting substrate breathability.

BENEFITS & FEATURES

- Specific for silicone-resin cycles
- Water-based insulating primer

F 482I

FILLER UNDERCOAT
WITH FINE PLASTER EFFECT



F 482I is a white filler undercoat, ideal for levelling off small imperfections and giving a similar final appearance to float-finish plaster. The nature of the raw materials used makes the product suitable in cases where very high breathability, low water absorption and high overall yield are all required.

BENEFITS & FEATURES

- Structural levelling undercoat
- Grading: 0.5 mm
- Easy to apply

SPECIFIC WEIGHT	approx. 1.00 kg/l
DILUTION IN WATER BY WEIGHT	1 part FS 412 with 1 part water
YIELD	approx. 7-9 m ² /l
PACK	16 litres
COLOUR	transparent

SPECIFIC WEIGHT	approx. 1.67 kg/l
DILUTION IN WATER BY WEIGHT	5-7%
YIELD	approx. 4-6 m ² /l per coat
PACK	14 litres
COLOUR	white

PS 403

HIGHLY BREATHABLE FINISH



PS 403 is a finish for exteriors that provides breathability, water repellency and excellent weather resistance at the same time. In addition, special molecules ensure high resistance to mould and algae. It is suitable for application on any type of plaster, in particular dehumidifying plasters where both very high breathability and low water absorption are required.

BENEFITS & FEATURES

- Very high breathability
- High water repellency
- Product protected against the growth of a wide range of algae and mould species

SPECIFIC WEIGHT	approx. 1.58 kg/l
DILUTION IN WATER BY WEIGHT	first coat up to 30%, second coat up to 20% for application by brush
YIELD	approx. 4-5 m ² /l (2 coats)
PACK	14 litres
COLOURS	selection from the colour chart: 365 A YEAR OF COLORS

SKIN 432

PROTECTIVE SILOXANE FINISH



SKIN 432 is a finish for exteriors featuring optimum water repellency and very high breathability, characteristics that allow versatile application of the product, from finishes on new and existing plasters, to the treatment of façades insulated with the FASSATHERM External Thermal Insulation Composite System. In addition, thanks to the special formulation, façades treated with SKIN 432 tend to remain cleaner than façades with traditional finishes for exteriors.

BENEFITS & FEATURES

- Maximum façade protection and cleanliness
- Optimum water repellency
- Treatment of insulated surfaces
- Product protected against the growth of a wide range of algae and mould species

SPECIFIC WEIGHT	approx. 1.55 kg/l
DILUTION IN WATER BY WEIGHT	First coat and any intermediate coats 15%. Finish coat to be diluted 5-10% by weight, depending on the chosen colour
YIELD	approx. 4-5 m ² /l (2 coats)
PACK	14 litres
COLOURS	selection from the colour chart: 365 A YEAR OF COLORS

RSR 421

SILICONE RESIN COATING
WITH RUSTIC FINISH



RSR 421 is a water-based finish coat putty that at the same time ensures breathability, water repellency and excellent weather resistance. RSR 421 is suitable for application on any type of plaster, including dehumidifying plasters and substrates insulated with the FASSATHERM External Thermal Insulation Composite System. Compliant with standard EN 15824.

BENEFITS & FEATURES

- Water repellent and breathable
- Suitable for FASSATHERM External Thermal Insulation Composite System and Renovation System
- Product protected against the growth of a wide range of algae and mould species

SPECIFIC WEIGHT	approx. 1.85 kg/l
READY TO USE	
AVAILABLE IN GRADINGS OF	0.6-1-1.5-2-3 mm
CONSUMPTION 0.6 mm	approx. 2.5-3.2 kg/m ² for 2 layers
CONSUMPTION 1 mm	approx. 2-2.5 kg/m ²
CONSUMPTION 1.5 mm	approx. 2.3-2.7 kg/m ²
CONSUMPTION 2 mm	approx. 2.6-3.4 kg/m ²
CONSUMPTION 3 mm	approx. 3.8-4.2 kg/m ²
PACK	25 kg
COLOURS	selection from the colour chart: 365 A YEAR OF COLORS



PROTECTIVE CYCLE FOR EXTERIORS

Cycle with **high protection** for exteriors using the Silicone Resin system products with **very high breathability and water repellency**. After applying **FS 412** water-based primer-

undercoat, complete with **RSR 421** thick-layer coating or **SKIN 432** finish coat. For slightly irregular substrates, before applying the **SKIN 432** finish coat, use **F 4821** filler undercoat.





CYCLE FOR RESTORING DAMP WALLS

The Silicone Resin system products, featuring both **very high breathability** and **low water absorption**, are ideal for **finishing cycles for restoring damp walls**.

After applying the **FS 412** water-based primer-undercoat, proceed with the **PS 403** highly breathable finish or, for a rustic effect, the **RSR 421** coating.

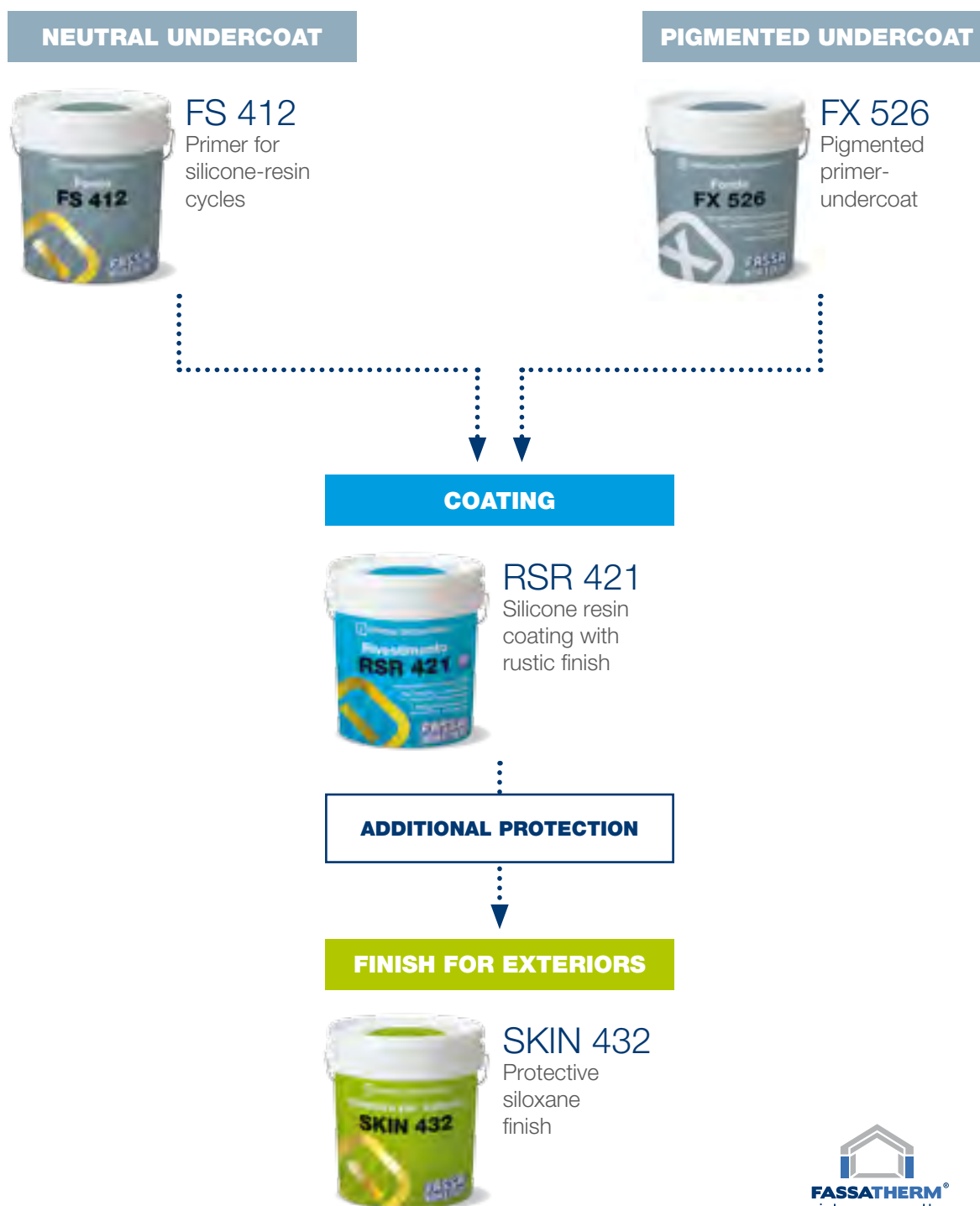




CYCLE FOR FASSATHERM EXTERNAL THERMAL INSULATION COMPOSITE SYSTEM

To **protect** and professionally complete application of the **FASSATHERM External Thermal Insulation Composite System**, it is recommended to apply **FS 412** neutral undercoat or **FX 526** pigmented undercoat, followed by **RSR**

421 coating. Further protection is ensured by subsequently applying the **SKIN 432** finish coat, which also helps keep the **surface cleaner**.





ACRYLIC SILOXANE SYSTEM

Innovative solution that combines the reliability of traditional acrylic formulations with the exclusive benefits of silicone resin.

Ideal for those who has already tried the effectiveness of the Acrylic system, the Acrylic Siloxane system offers the opportunity to achieve even higher performance and longer lasting results.

- WIDE RANGE OF COLOURS
- HIGHLY PROFESSIONAL PRODUCTS
- EXCEPTIONAL PERFORMANCE

UNDERCOATS

FX 526 p. 38

FINISHES FOR EXTERIORS

FX 505 p. 38

COATINGS

FX 561 p. 39

APPLICATION CYCLES p. 40



ACRYLIC SILOXANE SYSTEM

FX 526

BOTTOM DI ANCHORING
PIGMENTED UNIVERSAL



FX 526 is a pigmented undercoat used as a filling primer-undercoat for various types of thick finish coatings in aqueous emulsion: synthetic, mineral, silicate or siloxane. Thanks to its hiding power it creates a uniform, coloured surface, at the same time, the fine aggregate ensures better adhesion of thick finish coatings both on the FASSATHERM External Thermal Insulation Composite System and on painted masonry substrates.

BENEFITS & FEATURES

- White or pigmented filling
- For thick coatings
- Pigmented undercoat for External Thermal Insulation Composite System - FASSATHERM

SPECIFIC WEIGHT	approx. 1.61 kg/l
DILUTION	in water approx. 5%
YIELD	approx. 6-8 m ² /l
PACK	5 and 14 litres
COLOURS	selection from the colour chart: 365 A YEAR OF COLORS

PX 505

FILLING ACRYLIC-SILOXANE FINISH



PX 505 is a water-based decorative paint for exteriors, white or coloured, to be used on both old and new floated lime-cement finish coat plasters for exteriors, concrete, etc. PX 505 offers excellent protection against the weather, due to its good breathability and water repellency.

BENEFITS & FEATURES

- High protection
- Good breathability
- Optimum water repellency
- Product protected against the growth of a wide range of algae and mould species

SPECIFIC WEIGHT	approx. 1.57 kg/l
DILUTION IN WATER BY WEIGHT	first coat up to 30%, second coat up to 20%
YIELD	approx. 4-5 m ² /l (2 coats)
PACK	5 and 14 litres
COLOURS	selection from the colour chart: 365 A YEAR OF COLORS

RX 561

RUSTICACRYLIC SILOXANE COATING



RX 561 is a finish coat putty made from acrylic copolymers, special polysiloxanes and specific additives to provide the product broad-spectrum protection against algae and mould species. The nature of the raw materials used gives a rustic-effect finish to the surface. RX 561 is used as a protective and decorative coating for exteriors on lime-cement plasters and on walls insulated with the FASSATHERM External Thermal Insulation Composite System. Also available in the winter version. Compliant with standard EN 15824.

BENEFITS & FEATURES

- Optimum water repellency
- Good breathability
- High protection
- Product protected against the growth of a wide range of algae and mould species

SPECIFIC WEIGHT	approx. 1.85 kg/l
AVAILABLE IN GRADINGS OF	1-1.5-2 mm
CONSUMPTION 0.6 mm	2.5-3.2 kg/m ² (2 coats)
CONSUMPTION 1 mm	approx. 2-2.5 kg/m ²
CONSUMPTION 1.5 mm	approx. 2.3-2.7 kg/m ²
CONSUMPTION 2 mm	approx. 2.6-3.4 kg/m ²
CONSUMPTION 3 mm	approx. 4-4.6 kg/m ²
PACK	25 kg
COLOURS	selection from the colour chart: 365 A YEAR OF COLORS



FINISH COAT CYCLE FOR EXTERIORS

The cycle for exteriors using the Acrylic Siloxane system products begins with the **FX 526** universal pigmented primer,

and is followed, depending on requirements, by the **PX 505** acrylic-siloxane finish or the **RX 561** coating.







ACRYLIC SYSTEM

Maximum versatility on various substrates, easy to apply and highly weatherproof. Vast selection of up to 1950 NCS® colours, for all requirements.

- VERSATILE USE
- WIDE RANGE OF COLOURS
- SOLUTIONS FOR INTERIORS

UNDERCOATS

FA 249	p. 44
PIGMENTO 013	p. 44
F 263A	p. 45

FINISHES FOR INTERIORS

LV 207 VELVET	p. 46
GYPSOPAINT	p. 46
PB 260 ACTIVE	p. 47
ACTIVE ONE	p. 47
PL 215	p. 48
PT 213	p. 48
PI 209	p. 49
RI 222	p. 49
PM 298	p. 50
P 200	p. 50

FINISHES FOR EXTERIORS

PG 288 PROTECT	p. 51
C 285 BETON-E	p. 51
PA 202 ACTIVE	p. 52
MR 287	p. 52

COATINGS

RTA 549	p. 53
RAR 256	p. 53

APPLICATION CYCLES p. 54

FA 249

PRIMER FOR ACRYLIC SYSTEM PRODUCTS



FA 249 is a water-based primer-undercoat used to insulate, prepare or stabilise the substrate before applying Acrylic system finish coat products, for both interiors and exteriors.

BENEFITS & FEATURES

- Water-based product
- Ensures uniformity and reduces absorption
- High yield

SPECIFIC WEIGHT	approx. 1.00 kg/l
DILUTION IN WATER BY WEIGHT	1 part FA 249 with 6-8 parts water
YIELD	approx. 25 m ² /l
PACK	Boxes of 12 x 1 litre, 5 and 16 litre packs
COLOUR	transparent

PIGMENTO 013

PIGMENTED UNDERCOAT FOR INTERIORS



PIGMENTO 013 is used as an undercoat for interiors, either white or coloured, on lime, lime-cement and gypsum plasters, and plasterboard, before interior painting cycles. Being pigmented, it ensures good preventive coverage of the substrate, meaning final coverage can be achieved using less coats of finish paint.

BENEFITS & FEATURES

- Hiding power
- Excellent white point
- Good yield
- Smooth

SPECIFIC WEIGHT	approx. 1.55 kg/l
DILUTION IN WATER BY WEIGHT	for application by brush/roller 15-20%
YIELD	approx. 12-15 m ² /l per coat
PACK	5 and 14 litres
COLOURS	selection of colours from the ColorLife paint mixing system

F 263A

FILLER UNDERCOAT
WITH FINE PLASTER EFFECT
FOR INTERIORS AND EXTERIORS



F 263A is a white filler undercoat for exteriors and interiors, ideal for levelling off small imperfections on walls and giving a similar final appearance to float-finish plaster. On smooth substrates such as plasterboard, it is the ideal undercoat for providing a roughened surface for subsequent application of finish coat products.

BENEFITS & FEATURES

- Structural undercoat with hiding power
- Grading: 0.5 mm
- Easy to apply

SPECIFIC WEIGHT	approx. 1.70 kg/l
DILUTION IN WATER BY WEIGHT	5-7%
YIELD	approx. 4-6 m ² /l per coat
PACK	5 and 14 litres
COLOUR	white

LV 207 VELVET

SUPER-WASHABLE WATER-BASED
FLAT PAINT



LV 207 Velvet is a white or coloured water-based washable flat paint for interiors, suitable for lime, lime-cement and gypsum plaster and plasterboard. It ensures good scrub resistance and gives the walls a silky appearance.

BENEFITS & FEATURES

- Smooth and flat effect
- Wide range of colours
- Exceptional yield
- Excellent scrub resistance

SPECIFIC WEIGHT	approx. 1.41-1.50 kg/l
GRADING	fine
GLOSS	dead flat
CONTRAST RATIO	Class 1 (with a yield of 5.5 m ² /l)
WET-SCRUB RESISTANCE	Class 1
DILUTION IN WATER BY WEIGHT	30-35% for application by brush or airless sprayer, 25% for application by roller
YIELD	approx. 7-8 m ² /l (2 coats)
PACK	boxes of 6 x 1 litre, 4 and 14 litre bottles
COLOURS	selection from in-living <i>paints</i> colour chart

GYPSOPAINT

WATER-BASED COVERING PAINT
IDEAL FOR PLASTERBOARD



GYPSOPAINT is a finish for interiors with excellent hiding power and low sheen, characteristics that make it especially suitable for applications on GYPSOTECH plasterboard. Its exceptional hiding power make it ideal also for other masonry substrates.

BENEFITS & FEATURES

- Exceptional hiding power
- Specifically for plasterboard
- Excellent white point
- Washable

SPECIFIC WEIGHT	approx. 1.48 kg/l
GRADING	fine
GLOSS	dead flat
CONTRAST RATIO	Class 1 (with a yield of 5.1 m ² /l)
WET-SCRUB RESISTANCE	Class 2
DILUTION IN WATER BY WEIGHT	approx. 10-15%
YIELD	approx. 4-5 m ² /l (2 coats)
PACK	5 and 14 litres
COLOURS	white + selection from in-living <i>paints</i> colour chart

ACRYLIC SYSTEM

COMBINATION OF SPECIFIC PRODUCTS FOR IMPROVED MOULD RESISTANCE

PB 260 ACTIVE

WATER-BASED PAINT WITH PROTECTIVE FILM



PB 260 Active is a water-based paint featuring the addition of special molecules that ensure the film of paint broad-spectrum protection against the growth of algae and mould species. It also shares the characteristics of flat finishes for interiors: easy to apply, good expansion, high hiding power and breathability.

BENEFITS & FEATURES

- Product protected against the growth of a wide range of algae and mould species
- Excellent hiding power
- Breathable, flat

ACTIVE ONE

DETERGENT SOLUTION FOR CLEANING MASONRY SURFACES



Complete description on page 80

SPECIFIC WEIGHT	approx. 1.65 kg/l
GRADING	fine
GLOSS	dead flat
CONTRAST RATIO	Class 1 (with a yield of 6 m ² /l)
WET-SCRUB RESISTANCE	Class 2
DILUTION IN WATER BY WEIGHT	first coat up to 35%, second coat up to 25%
YIELD	approx. 4.5-6 m ² /l (2 coats)
PACK	5 and 14 litres
COLOURS	selection from in-living <i>paints</i> colour chart

PL 215

WASHABLE WATER-BASED FLAT PAINT



PL 215 is a washable finish for interiors with acrylic binders in aqueous emulsion, featuring good breathability. It contains additives that ensure easy application, good expansion and high washability. The high titanium dioxide content moreover provides excellent hiding power.

BENEFITS & FEATURES

- Washable
- High yield
- Good expansion

PT 213

WATER-BASED PAINT WITH HIGH HIDING POWER



PT 213 is a finish for interiors featuring excellent breathability. It contains additives that ensure easy application, and good expansion. Its special formulation provides high hiding power in just one coat. It is suitable for any type of float-finish masonry substrate, giving the wall a uniform and pleasant appearance.

BENEFITS & FEATURES

- Good hiding power
- Breathable
- High-class finish

SPECIFIC WEIGHT	approx. 1.64 kg/l
GRADING	fine
GLOSS	dead flat
CONTRAST RATIO	Class 2 (with a yield of 6.4 m ² /l)
WET-SCRUB RESISTANCE	Class 2
DILUTION IN WATER BY WEIGHT	first coat up to 35%, second coat up to 25%
YIELD	approx. 5-6 m ² /l (2 coats)
PACK	5 and 14 litres
COLOURS	selection from in-living <i>paints</i> colour chart

SPECIFIC WEIGHT	approx. 1.66 kg/l
GRADING	fine
GLOSS	dead flat
CONTRAST RATIO	Class 1 (with a yield of 6 m ² /l)
WET-SCRUB RESISTANCE	Class 2
DILUTION IN WATER BY WEIGHT	first coat up to 35%, second coat up to 25%
YIELD	approx. 4.5-6 m ² /l (2 coats)
PACK	5 and 14 litres
COLOURS	selection from in-living <i>paints</i> colour chart

PI 209

UNIVERSAL WATER-BASED PAINT



PI 209 is a finish for interiors featuring very high breathability, while its special formulation ensures excellent hiding power. It is suitable for any type of float-finish masonry substrate, giving the wall a uniform, solid and pleasant appearance.

BENEFITS & FEATURES

- Very high breathability
- Very good hiding power
- Excellent yield

SPECIFIC WEIGHT	approx. 1.70 kg/l
GRADING	fine
GLOSS	dead flat
CONTRAST RATIO	Class 1 (with a yield of 4.7 m ² /l)
WET-SCRUB RESISTANCE	Class 5
DILUTION IN WATER BY WEIGHT	first coat up to 40%, second coat up to 30%
YIELD	approx. 4-5 m ² /l (2 coats)
PACK	5 and 14 litres
COLOURS	selection from in-living <i>paints</i> colour chart

RI 222

DECORATIVE AND PROTECTIVE COATING WITH RUSTIC EFFECT FOR INTERIORS



RI 222 is a premium decorative putty coating for interiors comprising graded marble granulate and light-stable white pigments. The nature of the raw materials used ensures the masonry excellent breathability and gives a rustic effect to interior surfaces. Available in white and two gradings.

BENEFITS & FEATURES

- Premium coating for interiors
- Excellent breathability
- Rustic effect

SPECIFIC WEIGHT	approx. 1.90 kg/l
GRADING	1-1.5 mm
DILUTION	add up to 2% water if necessary
CONSUMPTION	1 mm: approx. 1.90-2.10 kg/m ² 1.5 mm: approx. 2.10-2.40 kg/m ²
PACK	25 kg
COLOUR	white

PM 298

WATER-BASED BREATHABLE PAINT
FOR PROFESSIONAL USE



PM 298 is a finish for interiors with very high breathability, used as a water-based flat paint on any type of float-finish masonry substrate. It gives the walls a uniform and silky appearance. It is especially suitable for professional applications on large surface areas.

BENEFITS & FEATURES

- For large surface areas
- Good hiding power
- Excellent white point

SPECIFIC WEIGHT	approx. 1.72 kg/l
GRADING	fine
GLOSS	dead flat
CONTRAST RATIO	Class 1 (with a yield of 4.7 m ² /l)
WET-SCRUB RESISTANCE	Class 5
DILUTION IN WATER BY WEIGHT	first coat up to 40%, second coat up to 30%
YIELD	approx. 4-5 m ² /l (2 coats)
PACK	5 and 14 litres
COLOUR	white

P 200

WATER-BASED WALL PAINT



P 200 is a water-based paint for interiors containing additives that ensure easy application, good expansion and high hiding power. It is especially suitable for professional applications on large surface areas.

BENEFITS & FEATURES

- Very high breathability
- Good hiding power
- Easy to apply

SPECIFIC WEIGHT	approx. 1.72 kg/l
GRADING	fine
GLOSS	dead flat
CONTRAST RATIO	Class 2 (with a yield of 4.5 m ² /l)
WET-SCRUB RESISTANCE	Class 5
DILUTION IN WATER BY WEIGHT	first coat up to 40%, second coat up to 30%
YIELD	approx. 4-5 m ² /l (2 coats)
PACK	14 litres
COLOURS	white

PG 288 PROTECT

SUPER WASHABLE SMOOTH
FLAT FINISH



PG 288 PROTECT is particularly suitable for decorating and protecting finish coat plaster, both new and already painted, and to provide high performance in terms of water repellency. PG 288 PROTECT is also used as a the CO₂ barrier on any outdoor concrete structure or surface.

BENEFITS & FEATURES

- Long-lasting
- Super-washable, smooth with silky effect
- Barrier against carbonation
- Product protected against the growth of a wide range of algae and mould species

SPECIFIC WEIGHT	approx. 1.31 kg/l
DILUTION IN WATER BY WEIGHT	5 to 8% by brush/airless sprayer; as-is by roller
YIELD	approx. 5-7 m ² /l (2 coats)
PACK	14 litres
COLOURS	selection from the colour chart: 365 A YEAR OF COLORS

C 285 BETON-E

PROTECTIVE ELASTOMER
FINISH FOR CONCRETE



C 285 BETON-E is used as a protective finish on outdoor concrete and reinforced concrete structures. When completely dry it forms a protective elastic film that can repair cracks and small damage, with very low permeability to water and the elements. It protects the treated structure against carbonation, providing a waterproof layer that reduces wear due to freeze-thaw cycles and ensures colour uniformity.

BENEFITS & FEATURES

- Effective barrier against carbonation
- Elastomer
- Good protection and water repellency
- Product protected against the growth of a wide range of algae and mould species
- Adequate bridge between microcracks

SPECIFIC WEIGHT	approx. 1.40 kg/l
DILUTION IN WATER BY WEIGHT	up to 15%
YIELD	approx. 5-6 m ² /l (2 coats)
PACK	14 litres
COLOURS	selection from the colour chart: 365 A YEAR OF COLORS

PA 202 ACTIVE

PROTECTIVE FILLING FINISH



PA 202 ACTIVE features high water repellency and alkali resistance; it is suitable for application outdoors on any lime-cement finish coat plaster.

BENEFITS & FEATURES

- Super-washable water-based filling paint
- Excellent protection against the weather
- Product protected against the growth of a wide range of algae and mould species

SPECIFIC WEIGHT	approx. 1.55 kg/l
DILUTION IN WATER BY WEIGHT	first coat up to 30%, second coat up to 20% for applications by brush
YIELD	approx. 4-5 m ² /l (2 coats)
PACK	14 litres
COLOURS	selection from the colour chart: 365 A YEAR OF COLORS

MR 287

WATER-BASED PAINT WITH EXCELLENT FILLING PROPERTIES FOR EXTERIORS



MR 287 is a fine micro-coating featuring high water repellency and alkali resistance. It is suitable for application on any lime/cement plaster, both outdoors and indoors, when requiring a uniform yet slightly rough finish.

BENEFITS & FEATURES

- Super-washable fine micro-coating
- Excellent hiding power
- High protection

SPECIFIC WEIGHT	approx. 1.73 kg/l
DILUTION IN WATER BY WEIGHT	up to 10% for applications by brush, as-is or maximum 5% for applications by roller
YIELD BY BRUSH	approx. 4-5 m ² /l (2 coats)
YIELD BY ROLLER	approx. 3-4 m ² /l (2 coats)
PACK	14 and 5 litres
COLOURS	selection from the colour chart: 365 A YEAR OF COLORS

RTA 549

ACRYLIC PROTECTIVE COATING



RTA 549 is a finish coat putty mainly used as a special protective and decorative coating for exteriors and on the FASSATHERM External Thermal Insulation Composite System. Compliant with standard EN 15824.

BENEFITS & FEATURES

- Excellent outdoor protection
- Product protected against the growth of a wide range of algae and mould species
- For surfaces with thermal insulation

SPECIFIC WEIGHT	approx. 1.85 kg/l
DILUTION IN WATER BY WEIGHT	up to 2% if necessary
AVAILABLE IN GRADINGS OF	1-1.5-2 mm
CONSUMPTION 1 mm	approx. 2-2.5 kg/m ²
CONSUMPTION 1.5 mm	approx. 2.3-2.7 kg/m ²
CONSUMPTION 2 mm	approx. 2.6-3.4 kg/m ²
PACK	25 kg
COLOURS	selection from the colour chart: 365 A YEAR OF COLORS

RAR 256

ACRYLIC COATING WITH RUSTIC FINISH



RAR 256 is a finish coat putty for exteriors made from special acrylic binders with high water repellency. The nature of the raw materials used ensures good breathability of the masonry and gives the surface a rustic finish. Compliant with standard EN 15824.

BENEFITS & FEATURES

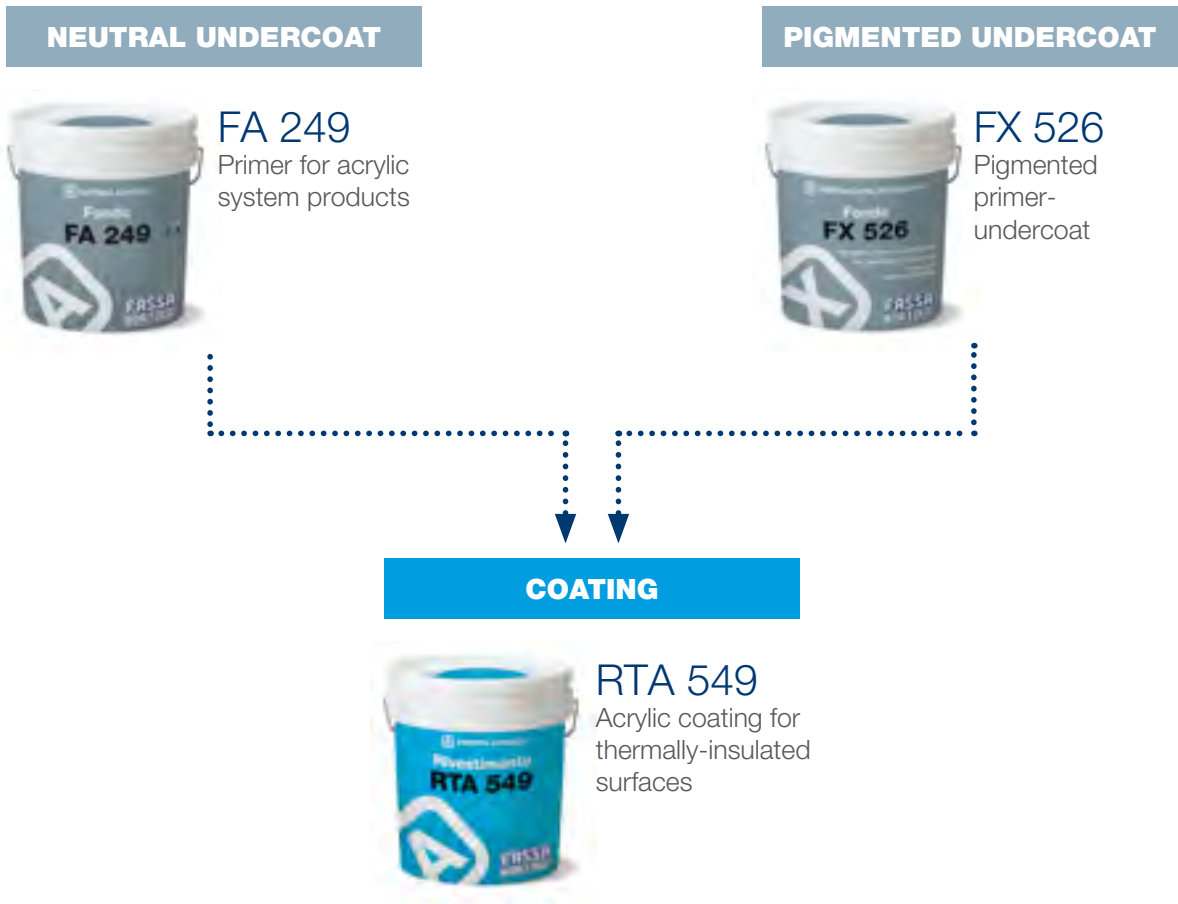
- Excellent outdoor protection
- High water repellency
- Rustic effect

SPECIFIC WEIGHT	approx. 1.85 kg/l
READY TO USE	
AVAILABLE IN GRADINGS OF	1-1.5 mm
CONSUMPTION 1 mm	approx. 2-2.5 kg/m ²
CONSUMPTION 1.5 mm	approx. 2.3-2.7 kg/m ²
PACK	25 kg
COLOURS	selection from the colour chart: 365 A YEAR OF COLORS

CYCLE FOR FASSATHERM EXTERNAL THERMAL INSULATION COMPOSITE SYSTEM

A **finishing cycle for the Fassatherm External Thermal Insulation Composite System**, comprising application of the **FA 249** undercoat and subsequently the **RTA 549** coating. The **FA 249** undercoat can be replaced by the **FX 526** universal

pigmented primer-undercoat that, thanks to its high hiding power, creates a **uniform, coloured surface** for subsequent application of the coloured coating.



FINISH COAT CYCLE FOR EXTERIORS

Three finish cycles for exteriors. FA 249 undercoat is the first stage, before then applying the finish, choosing between **PA 202 ACTIVE**, protective and filling finish, **PG 288 PROTECT**, super-washable flat, or **MR 287** with excellent filling properties. If using colours with lower hiding power,

before applying the finish it is recommended to use **FX 526**; on slightly irregular substrates, on the other hand, use **F 263A** filling undercoat.



FINISH COAT CYCLE FOR CONCRETE

For finishing concrete, depending on the chosen colour, the following can be applied: **C 285 BETON-E**, which includes a **selection of grey colours**, or **PG 288 PROTECT**, with a

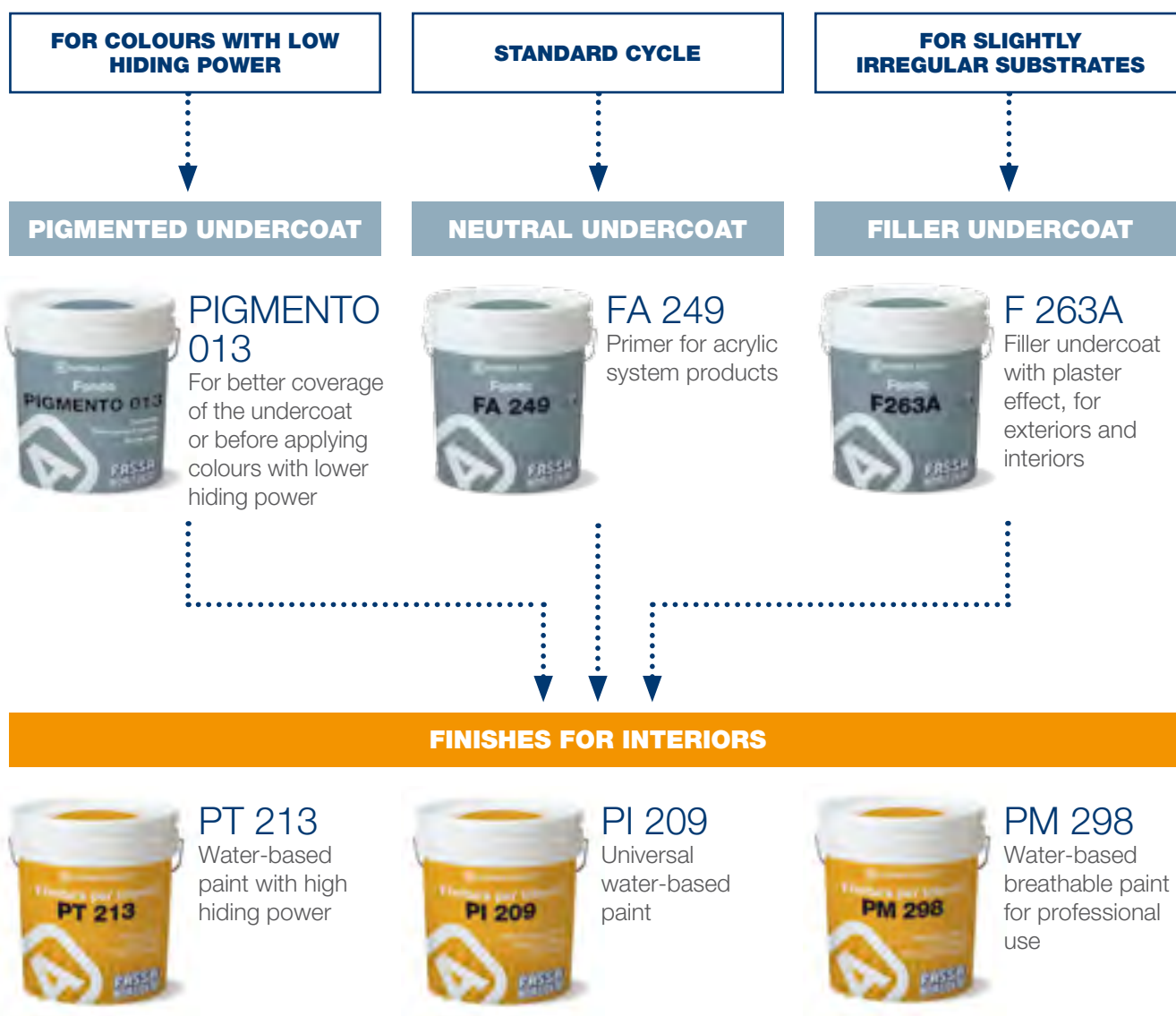
vast selection of colours. For the undercoat, evaluate the use of **SOL-FIX 211** solvent-based primer as an alternative to **FA 249** water-based primer-undercoat.



BREATHABLE CYCLE FOR INTERIORS

For **finishing interior surfaces**, depending on requirements, **PT 213**, **PI 209** or **PM 298** can be used, after having applied **FA 249** transparent primer; on slightly irregular substrates,

apply the **F 263A** filler undercoat, ideal for levelling off small imperfections. For **better final coverage**, use **PIGMENTO 013**.



WASHABLE CYCLE FOR INTERIORS

When a **washable finish** for interiors is required, choose between **LV 207 VELVET** or **PL 215**. Specifically, **LV 207 VELVET** gives the walls a smooth and flat effect. Both finishes

come in a **vast range of colours from the NCS chart**. For **better final coverage** use **PIGMENTO 013**.



CYCLE ON PLASTERBOARD

GYPSOPAINT and **LV 207 VELVET** are two finishes for interiors featuring **high hiding power**, making them the best choice for application on plasterboard. **FA 249** is the first undercoat, while subsequent application of **F 263A** filler undercoat on the

smooth surface of the plasterboard is the best solution for ensuring a roughened substrate and giving a similar final appearance to fine float-finish plaster. For **better final coverage** use **PIGMENTO 013**.





SILICATE SYSTEM

A line of mineral finishes, ideal for decorations in historic town centres to achieve high-class effects. Silicate products do not alter the water vapour permeability properties of the substrate.

- FLAT APPEARANCE
- MINERAL PRODUCTS
- BREATHABLE
- FOR BUILDINGS OF HISTORIC-ARTISTIC INTEREST AND OLD TOWN CENTRES

UNDERCOATS

FASSIL F 328 p. 62
FASSIL F 357S p. 62

FINISHES FOR EXTERIORS

FASSIL P 313 p. 63

COATINGS

FASSIL R 336 p. 63

APPLICATION CYCLES p. 64

FASSIL F 328

SILICATE PRIMER



FASSIL F 328 is a water-based primer-undercoat made from potassium silicate, used to insulate, prepare or stabilise the substrate before applying Silicate system finish coat products, for both interiors and exteriors.

BENEFITS & FEATURES

- Mineral-based primer-undercoat
- Very high breathability

SPECIFIC WEIGHT	approx. 1.00 kg/l
DILUTION IN WATER BY WEIGHT	1 part FASSIL F 328 with 1 part water
YIELD	approx. 7-9 m ² /l
PACK	16 litres
COLOUR	transparent

FASSIL F 357S

FILLER UNDERCOAT
WITH FINE PLASTER EFFECT
FOR INTERIORS AND EXTERIORS



FASSIL F 357S is a filler undercoat putty for exteriors and interiors made from potassium silicate, and is ideal for levelling off small imperfections on walls, giving a similar final appearance to float-finish plaster. It also creates an adhesion bridge between substrates coated with organic paints and the subsequent silicate finish, keeping open the capillary network needed for the passage of water vapour.

BENEFITS & FEATURES

- Mineral-based bridging undercoat
- Filling and uniformly
- Fine grading: 0.5 mm

SPECIFIC WEIGHT	approx. 1.74 kg/l
DILUTION IN WATER BY WEIGHT	approx. 5-7%
YIELD	approx. 3.3-4.2 m ² /l
PACK	14 litres
COLOUR	white

FASSIL P 313

SMOOTH WATER-BASED SILICATE
PAINT



FASSIL P 313 is a water-based paint made from potassium silicate, with very high breathability. It has a mineral appearance, and is compliant with standard DIN 18363. The nature of the raw materials used ensures the breathability of the masonry remains unaltered.

BENEFITS & FEATURES

- Potassium silicate finish
- Smooth effect with good hiding power
- Very high breathability

FASSIL R 336

SILICATE COATING WITH RUSTIC
FINISH



FASSIL R 336 is a finish coat putty for exteriors and interiors made from stabilised potassium silicate, with very high breathability, compliant with standard DIN 18363. FASSIL R 336 is especially suitable when very high breathability is required, such as in restoration work and on historic buildings. Compliant with standard EN 15824.

BENEFITS & FEATURES

- Very high breathability
- Mineral appearance
- Ideal for historic buildings

SPECIFIC WEIGHT	approx. 1.47 kg/l
DILUTION IN WATER BY WEIGHT	first coat up to 30% second coat up to 20% for applications by brush
YIELD	3.5-4.5 m ² /l (2 coats)
PACK	5-14 litres
COLOURS	selection from the colour chart: 365 A YEAR OF COLORS

SPECIFIC WEIGHT	approx. 1.85 kg/l
READY TO USE	
AVAILABLE IN GRADINGS OF	0.6-1-1.5 mm
CONSUMPTION 0.6 mm	approx. 2.5-3.2 kg/m ² for 2 layers
CONSUMPTION 1 mm	approx. 2-2.9 kg/m ²
CONSUMPTION 1.5 mm	approx. 2.3-2.9 kg/m ²
PACK	25 kg
COLOURS	selection from the colour chart: 365 A YEAR OF COLORS

CYCLE FOR EXTERIORS

Cycles for exteriors using the Silicate system products with **very high breathability**. After applying the **FASSIL F 328** water-based primer-undercoat, complete the cycle using the **FASSIL R 336** thick-layer coating or **FASSIL P 313** finish.

For slightly irregular substrates, before applying the **FASSIL P 313** finish, it is recommended to use the **FASSIL F 357S** filler undercoat.







DECORCALCE SYSTEM

Superior mineral products featuring a special appearance and high breathability made from pure natural lime putty, ideal for both restoration of old buildings and adding value to new constructions. The natural composition ensures excellent qualitative properties, providing aged finishes and effects using easy-to-apply modern products.

- DECORATIVE
- MINERAL
- HIGH-CLASS EFFECTS
- NATURAL LIME
- MAXIMUM BREATHABILITY

DECORATIVE FINISHES

I 133	p. 68
LS 122	p. 69

I 133

FINE MINERALLIME-BASED DECORATIVE PLASTER



I 133 is a decorative finish coat and base coat plaster made from lime putty, with high breathability and good filling of the substrate.

BENEFITS & FEATURES

- Decorative plaster
- Mineral lime-based
- Very high breathability
- Fine decorative plaster effect

SPECIFIC WEIGHT	approx. 1.60 kg/l
GRADING	< 0.6 mm
YIELD	approx. 0.33-0.40 m ² /kg (2 coats)
PACK	25 kg

LS 122

MINERAL LIME-BASED SMOOTH COAT WITH SATIN FINISH



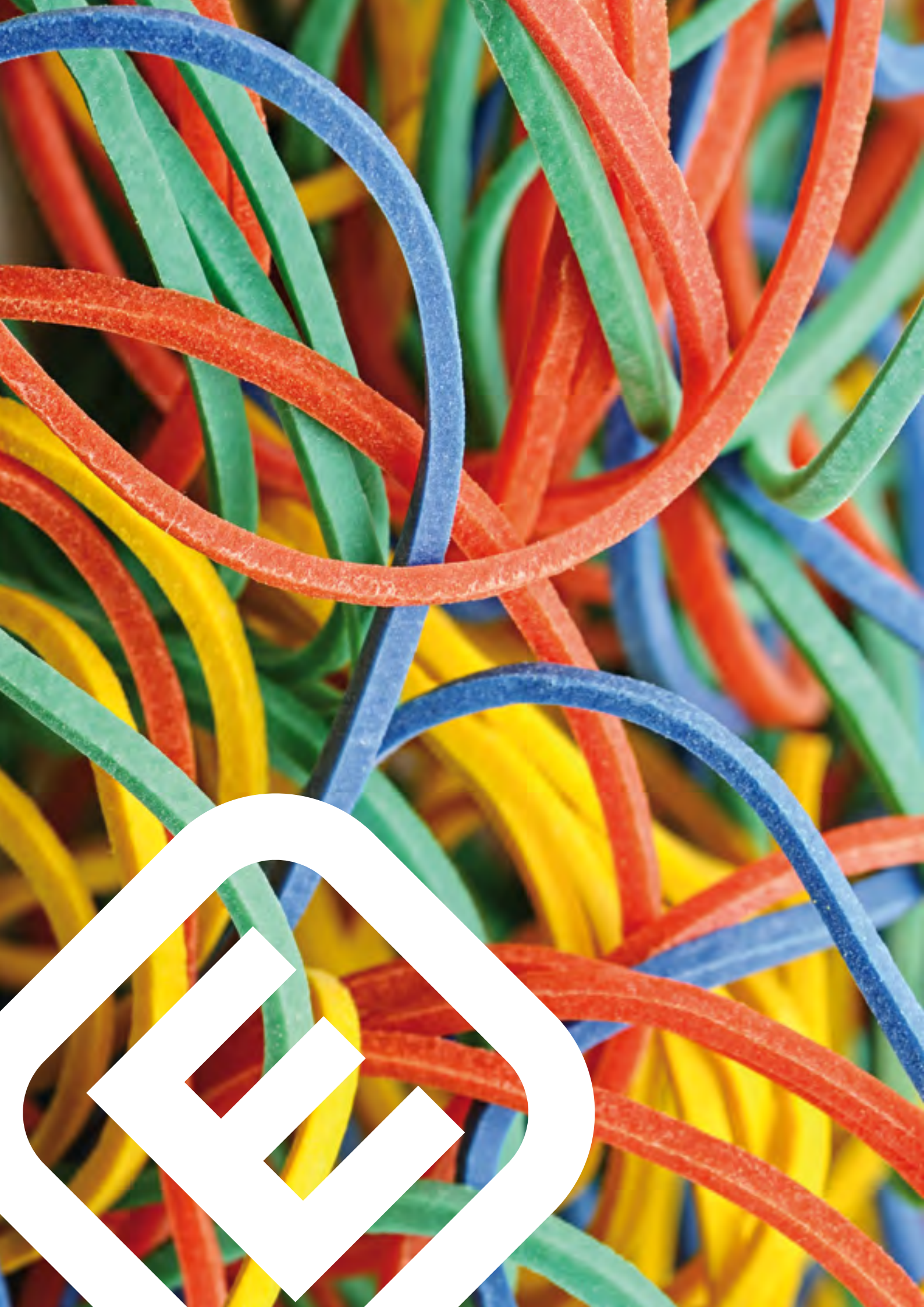
LS 122 is a mineral-based smooth coat made from lime putty and crushed marble. LS 122 is used to achieve a smooth and compact finish ("faux marble" effect) for decorating the interiors and exteriors of buildings, while at the same time ensuring very high breathability. It is used especially on buildings of historic and artistic interest.

BENEFITS & FEATURES

- Faux marble effect
- Mineral lime-based decorative finish
- High water vapour permeability

SPECIFIC WEIGHT	approx. 1.50 kg/l
GRADING	< 0.5 mm
YIELD	approx. 0.50-0.55 m ² /kg (finished)
PACK	25 kg





ELASTOMER SYSTEM

Elastomer System products are ideal for restoration and reconstruction of exterior façades. Their elastic structure makes them the best solution for reducing the appearance of hairline cracks and providing the façade protection and greater resistance against attack by mould and algae.

- EXCELLENT ELASTICITY
- FOR MAINTENANCE AND RESTORATIONS
- WIDE RANGE OF COLOURS
- TO MINIMISE ANY HAIRLINE CRACKS

UNDERCOAT

FOND-ELAST 223 p. 72

FINISH FOR EXTERIORS

PE 224 ELAST p. 72

COATING

RI-ELAST 225 p. 73

APPLICATION CYCLES p. 74

FOND-ELAST 223

ELASTOMER LEVELLING
UNDERCOAT WITH FINE
PLASTER EFFECT



FOND-ELAST 223 is a levelling and filling undercoat with fine plaster effect, featuring high elasticity and water repellency; suitable for application on any finish coat plaster, for the purpose of both minimising the appearance of surface hairline cracks, and as a solution to any existing problems, before applying the finish coats.

BENEFITS & FEATURES

- High elasticity
- Intermediate coat for elastomer cycles
- Excellent filling properties
- Suitable for hairline cracks

PE 224 ELAST

ELASTOMER FILLING FINISH



PE 224 ELAST is a water-based protective and decorative paint with high elasticity and water repellency, ideal for reducing the appearance of hairline cracks. It can be used both preventively and as a solution to existing problems.

BENEFITS & FEATURES

- Suitable for hairline cracks
- Excellent elasticity
- High protection
- Product protected against the growth of a wide range of algae and mould species

SPECIFIC WEIGHT	approx. 1.53 kg/l
DILUTION IN WATER	up to 10% by volume depending on the tool used for application
YIELD	approx. 4-5 m ² /l
PACK	14 litres
COLOUR	white

SPECIFIC WEIGHT	approx. 1.45 kg/l
DILUTION IN WATER BY WEIGHT	first coat up to 15%, second coat up to 5%, for application by brush
YIELD	5/-6 m ² /l (2 coats)
PACK	14 litres
COLOURS	selection from the colour chart: 365 A YEAR OF COLORS

RI-ELAST 225

ELASTOMER COATING
WITH RUSTIC FINISH



RI-ELAST 225 is a protective and decorative coating putty for exteriors, featuring high elasticity, which minimises the appearance of surface hairline cracks. It can be used both preventively and as a solution to existing problems. Compliant with standard EN 15824.

BENEFITS & FEATURES

- High elasticity
- With microfibres
- Excellent protection
- Product protected against the growth of a wide range of algae and mould species

SPECIFIC WEIGHT	approx. 1.85 kg/l
DILUTION IN WATER BY WEIGHT	up to 2% if necessary
AVAILABLE IN GRADINGS OF	1-1.5 mm
CONSUMPTION 1 mm	approx. 2-2.5 kg/m ²
CONSUMPTION 1.5 mm	approx. 2.3-2.7 kg/m ²
PACK	25 kg
COLOURS	selection from the colour chart: 365 A YEAR OF COLORS

FINISH COAT CYCLE FOR EXTERIORS

Where **hairline cracks are present**, the recommended cycle for exteriors involves application of **FA 249** undercoat, followed by **RI-ELAST 225** coating. If using the **PE 224 ELAST** finish coating, first apply **FOND-ELAST 223** levelling and filling

undercoat with fine plaster effect. On older substrates, always evaluate whether to use **SOL-FIX 211** solvent-based primer instead of the **FA 249** undercoat.







COMPLEMENTARY PRODUCTS

Complementary Paint System products
to be used in special situations.

SOL-FIX 211	p. 78
IS 510	p. 78
FAST 299	p. 79
PAC 272	p. 79
ACTIVE ONE	p. 80



SOL-FIX 211

SOLVENT-BASED ACRYLIC PRIMER



SOL-FIX 211, due to its high penetrating power, is used to insulate, prepare or stabilise masonry substrates before painting with products from the Acrylic, Elastomer and Acrylic Siloxane systems.

BENEFITS & FEATURES

- High penetrating power
- Substrate preparation

SPECIFIC WEIGHT	approx. 0,82 kg/l
YIELD	approx. 5-6 m ² /l (per layer) The values refer to product applied on smooth substrates of average absorbance; these should be verified by preliminary tests on the specific substrate.
PACK	20 litres
COLOUR	transparent

IS 510

SILOXANE WATER-REPELLENT



IS 510 provides greater water repellency when treating substrates such as facing brick, concrete and stone in general. For marble, it is recommended to carry out a preliminary test on a small area, in order to verify compatibility. It is also used as a protective finish on lime-based products, such as LS 122, or mineral-based wall coatings such as RF 100, RM 200 and RG 300. IS 510 does not alter the breathability of the substrate it is applied on, rather it penetrates into the treated structure and leaves its appearance unchanged.

BENEFITS & FEATURES

- Maximum protection
- Does not alter substrate breathability
- Water-repellent

SPECIFIC WEIGHT	approx. 0,80 kg/l
YIELD	variable, depending on the absorbency of the treated material
PACK	5-16 litres
COLOUR	transparent



COMPLEMENTARY PRODUCTS

FAST 299

STUCCO PASTE



FAST 299 is a paste for interiors, ready-to-use, with high filling capacity. It is used for rendering and smoothing off interior plaster and concrete surfaces, before applying the Acrylic system finishes.

BENEFITS & FEATURES

- Ready-to-use
- Easy to use
- High filling power

PAC 272

PRIMER MADE FROM
SYNTHETIC RESINS



PAC 272 is a dispersion of synthetic resins and graded sand used to improve the adhesion of gypsum and lime-gypsum plaster on concrete substrates.

BENEFITS & FEATURES

- Primer-undercoat
- For smooth surfaces

SPECIFIC WEIGHT	approx. 1.70 kg/l
GRADING	< 0.1 mm
YIELD	variable, depending on need (around 4-5 m ² /kg per layer of product)
PACK	20 kg
COLOUR	white

SPECIFIC WEIGHT	approx. 1.60 kg/l
DILUTION	ready-to-use
YIELD	by brush approx. 0.68 kg/m ² by roller approx. 0.76 kg/m ²
PACK	25 kg
COLOUR	blue



COMPLEMENTARY PRODUCTS

ACTIVE ONE

DETERGENT SOLUTION FOR CLEANING
MASONRY SURFACES



ACTIVE ONE is an aqueous solution with a high active chlorine content for cleaning interior and exterior masonry surfaces. The product is applied by brush or using the spray bottle provided, directly onto the surfaces being treated and leaving it to act for around 30 minutes.

BENEFITS & FEATURES

- Detergent for walls
- For interiors and exteriors

SPECIFIC WEIGHT	approx. 1.19 kg/l
DILUTION	ready-to-use
YIELD	approx. 6-8 m ² /l per coat
PACK	boxes of 12 x 0.5 litre bottles, and boxes of 2 x 5 litre containers



[illegible]



FASSA S.r.l.

Via Lazzaris, 3 - 31027 Spresiano (TV) - Italy
tel. +39 0422 7222 - fax +39 0422 887509
www.fassabortolo.com - fassa@fassabortolo.com

PRODUCTION FACILITIES - Italy

Spresiano (TV) - tel. +39 0422 521945 - fax +39 0422 725478
Artena (Rome) - tel. +39 06 951912145 - fax +39 06 9516627
Bagnasco (CN) - tel. +39 0174 716618 - fax +39 0422 723041
Bitonto (BA) - tel. +39 080 5853345 - fax +39 0422 723031
Calliano (AT) - tel. +39 0141 915145 - fax +39 0422 723055
Mazzano (BS) - tel. +39 030 2629361 - fax +39 0422 723065
Molazzana (LU) - tel. +39 0583 641687 - fax +39 0422 723045
Moncalvo (AT) - tel. +39 0141 911434 - fax +39 0422 723050
Montichiari (BS) - tel. +39 030 9961953 - fax +39 0422 723061
Popoli (PE) - tel. +39 085 9875027 - fax +39 0422 723014
Ravenna - tel. +39 0544 688445 - fax +39 0422 723020
Sala al Barro (LC) - tel. +39 0341 242245 - fax +39 0422 723070

FASSALUSA Lda - Portugal

São Mamede (Batalha) - tel. +351 244 709 200 - fax +351 244 704 020

SALES OFFICES - Italy

Altopascio (LU) - tel. +39 0583 216669 - fax +39 0422 723048
Bolzano - tel. +39 0471 203360 - fax +39 0422 723008
Sassuolo (MO) - tel. +39 0536 810961 - fax +39 0422 723022

FASSA SA - Switzerland

Mezzovico (Lugano) - tel. +41 (0) 91 9359070 - fax +41 (0) 91 9359079
Aclens - tel. +41 (0) 21 6363670 - fax +41 (0) 21 6363672
Dietikon (Zurich) - tel. +41 (0) 43 3178588 - fax +41 (0) 43 3211712

FASSA FRANCE - France

Lyon - tel. 0800 300338 - fax 0800 300390

FASSA HISPANIA SL - Spain

Madrid - tel. +34 606 734 628

FASSA UK Ltd - United Kingdom

Tewkensbury - tel. +44 (0) 1753573078

